

MBSips

MIAMI BEACH

Miami Beach Service-line Integrity Program

WE NEED YOUR HELP! The City of Miami Beach is actively working to reduce the risk of lead exposure by identifying areas where lead and galvanized iron service lines may exist.

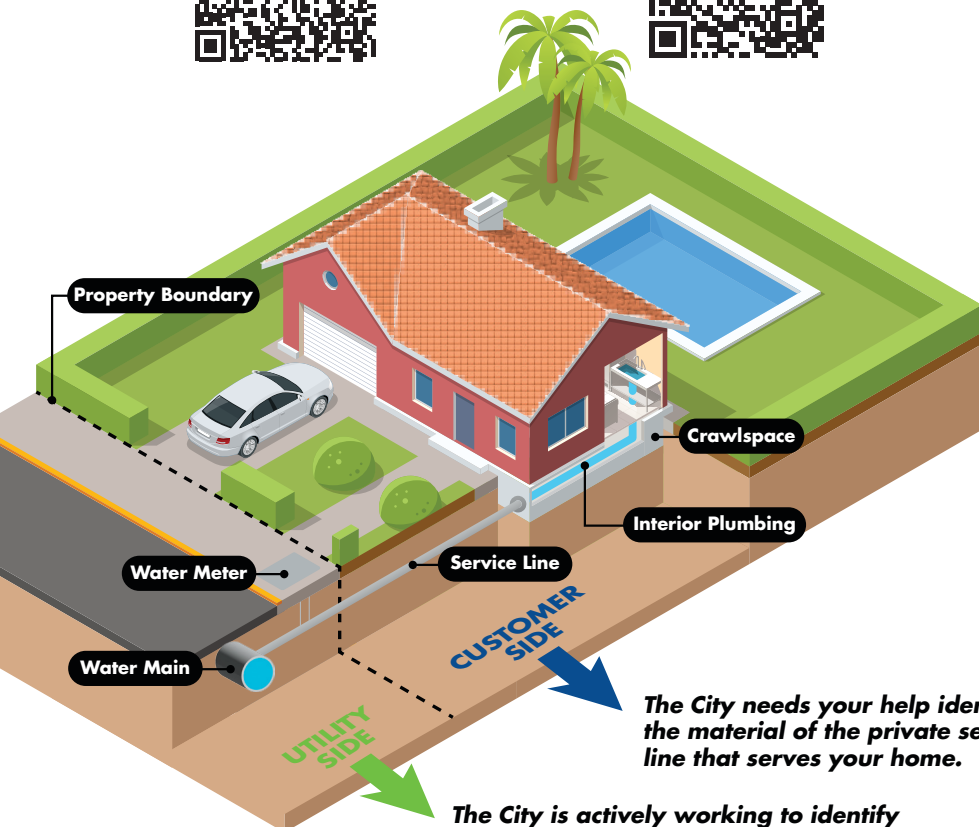
Report your service line material and receive a \$50 credit on your next water bill.

The City carefully monitors and controls water system chemistry to prevent lead in distribution system pipes from entering drinking water. The presence of lead and galvanized pipes can, however, leach lead into drinking water. There are also other sources of lead that you and your family could be exposed to. Visit the websites below to learn more about how to minimize your risk of lead exposure.

Scan to view the
[MBSips Program Website](#)



Scan to view the
[Lead Service Line Map](#)



HOW TO PARTICIPATE

First collect these tools, then follow the steps on the flip side of this sheet to identify your service line materials and complete our survey for the water bill credit.



Screwdriver or metal tool



Magnet



Coin



Phone or digital camera



Flashlight (if needed)

◀ LOCATING YOUR SERVICE LINE

Your service line can be located where it enters your home in the crawl space area.

***DID YOU KNOW?** There is NO safe level of lead in the human body. Lead can harm anyone, but babies, young children and pregnant women are at particular risk.*

SCRATCH AND MAGNET MATERIAL IDENTIFICATION TEST

Follow steps 1-5 unless your service line appears to be made of PVC.

STEP 1 Using your screwdriver or other tool, lightly scratch your water service line.

STEP 2 Place a magnet on the pipe.

STEP 3 Tap the pipe with a coin.

STEP 4 Take a picture of your service line.

STEP 5 Scan the QR code to submit your [material identification survey](#) and picture to the City of Miami Beach.



TYPES OF PIPES



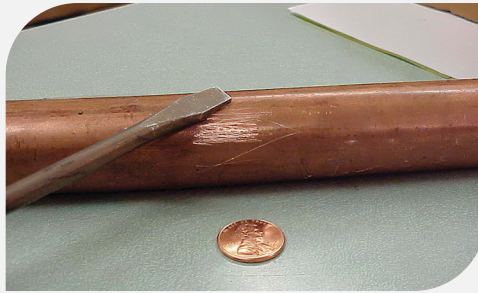
LEAD PIPE

Scratched area will be silver and shiny.

Magnet will not stick to a lead pipe.

Tapping will produce a dull noise.

Lead pipe **IS** a source of lead in drinking water.



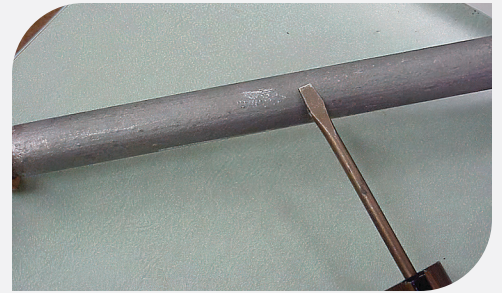
COPPER PIPE

Scratched area will be copper and shiny.

Magnet will not stick to a copper pipe.

Tapping will produce a metallic ringing noise.

Copper pipe is **NOT** a source of lead in drinking water.



GALVANIZED PIPE

Scratched area will remain dull gray.

Magnet will stick to a galvanized pipe.

Tapping will produce a metallic ringing noise.

Galvanized pipe **CAN** be a source of lead in drinking water.

SERVICE LINE REPLACEMENT

If you have a lead or galvanized iron service line, apply for Service Line Replacement via the Building Department portal at <https://energovcss.miamibeachfl.gov/energovprod/selfservice#/home>.

CONTACT US

We're here to help! Contact MBSips@miamibeachfl.gov if you have any questions regarding lead service line identification.