

**BAYSHORE PARK (FORMER PAR 3)  
CITY OF MIAMI BEACH**

**Community Meeting**

June 28, 2021





To create a passive park of natural beauty for community enjoyment and enrichment, reflecting our island's culture and ecology while serving as a model of sustainability, stewardship and resilience.



# ISSUES & CONSTRAINTS



Pump Station



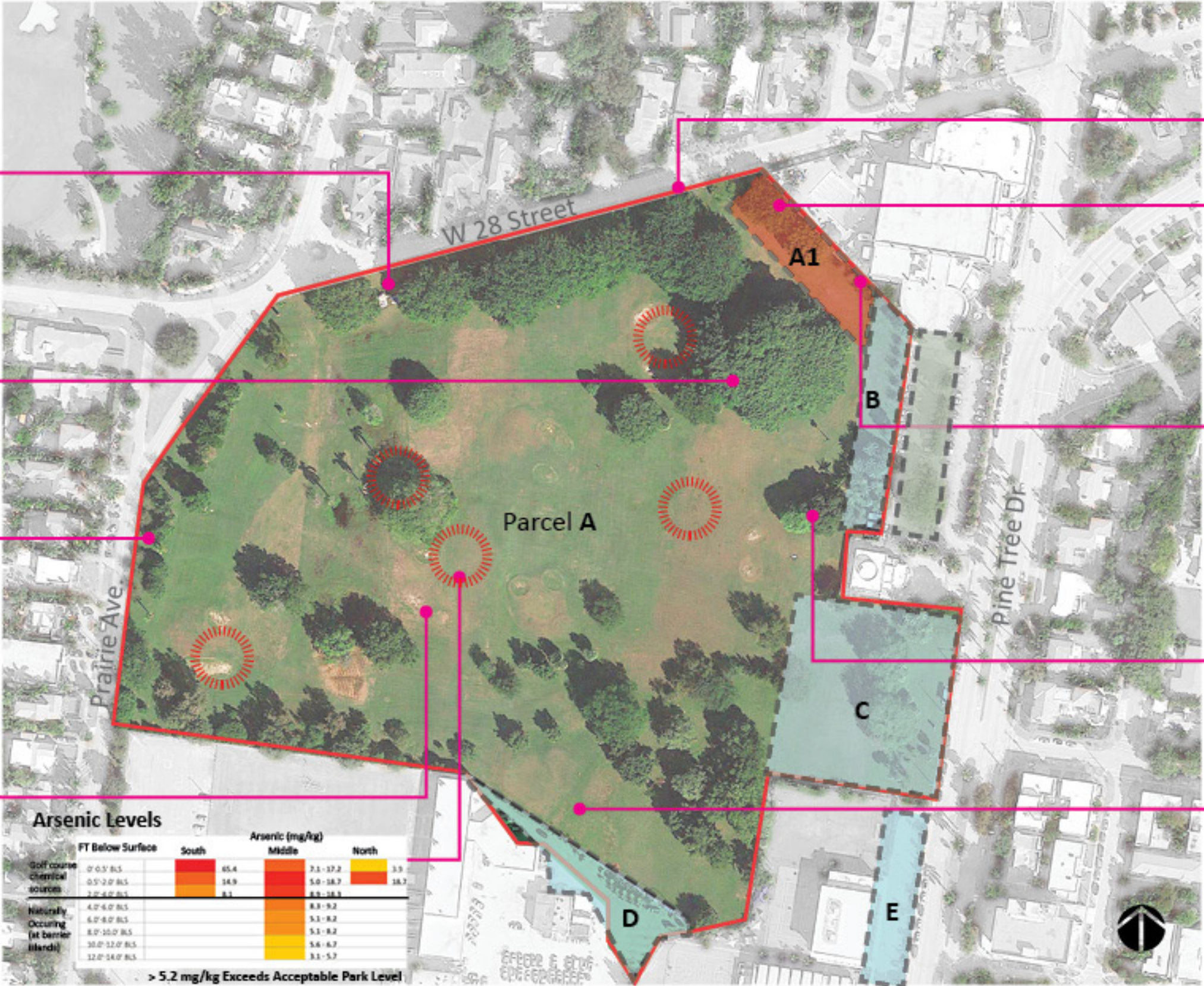
Tree Maintenance & Preservation



Stormwater / Swale



No Sense of Place



Lack of Sidewalks



Edge Conditions



Lack of Connection



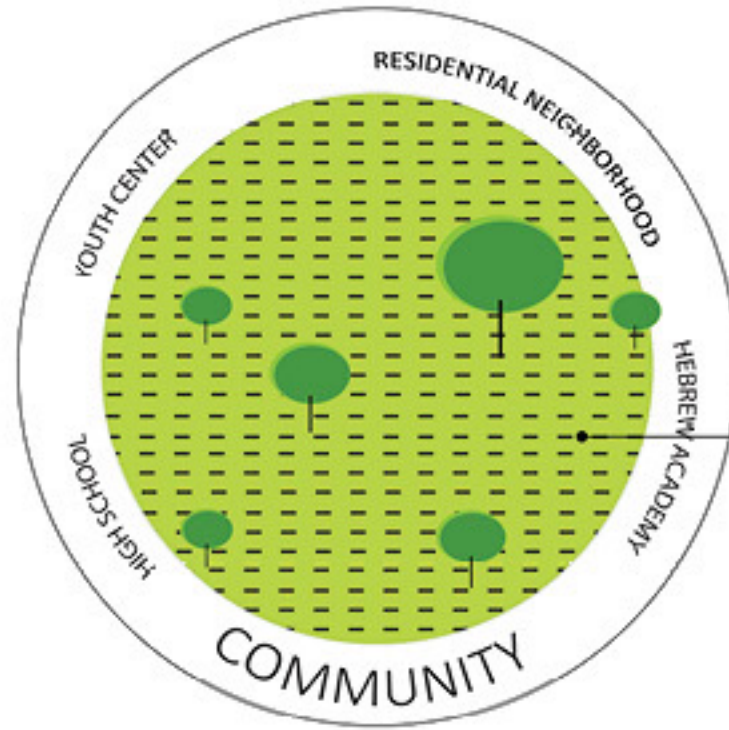
Homeless Residents



Lack of Biodiversity



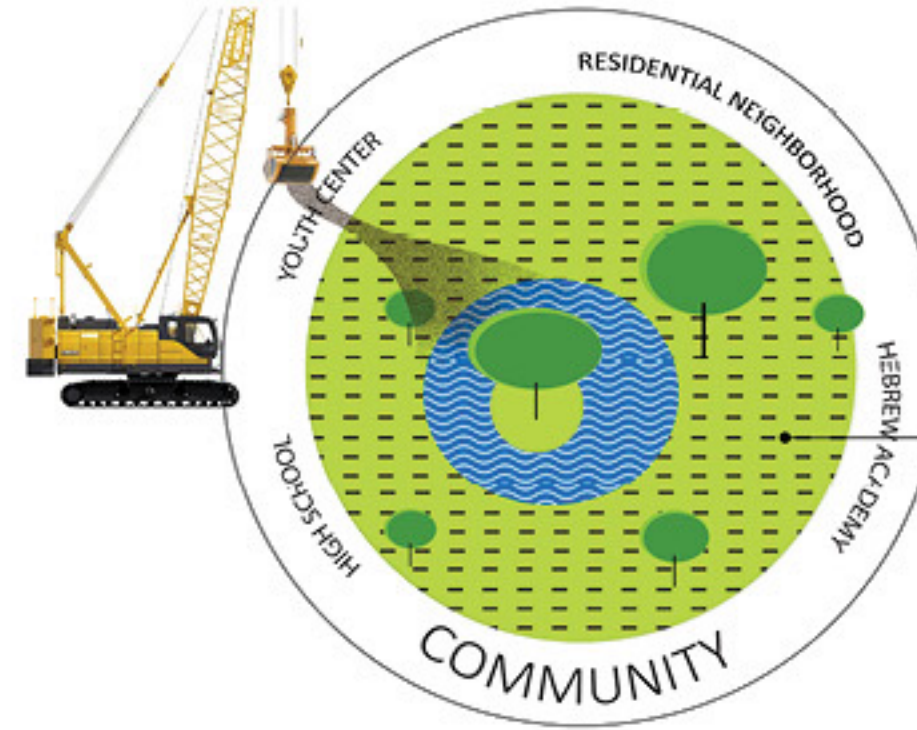
# DESIGN APPROACH & STRATEGY



## STEP 1


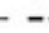
- Existing site condition

 EXISTING TREES  
 CONTAMINATED SOILS



## STEP 2

- Preserve best existing trees
- Dig lake

 EXISTING TREES  
 CONTAMINATED SOILS



## STEP 3

- Form golf-like landforms to cap contaminated soil
- Create various littoral zones for diverse ecological habitats
- Improve drainage



## STEP 4

- Complete landforms with clean fill
- Cap remainder of site
- Final grading



Cut & Fill





# PROGRAM & ACTIVITIES

## Lake

Boardwalks  
Bird Watching

Amphitheater  
Gathering

## Trail

Walking  
Jogging

Biking  
Exercise  
Equipment

## Playground

2-5 yr old play  
5+ yr old play

## Tennis Facilities

Courts  
Shelters  
Seating

Restrooms  
Office  
Storage

## Dog Park

Small dog play  
Large dog play

## Education

Arboretum  
Butterfly garden  
Lake, Aquatic Littoral Zone

## Hills & Lawns

Fitness  
Contemplation  
Yoga

Open play  
Droning  
Disc golf

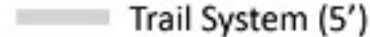
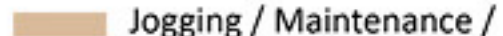




# CONCEPT PLAN

## LEGEND

- 1 Playground
- 2 Bus stop
- 3 Tennis Courts
- 4 Tennis Facility and Bathroom
- 5 Parking
- 6 Dog Park
- 7 Entrance Plaza
- 8 Butterfly Garden
- 9 Amphitheater
- 10 Sunset Terrace
- 11 Lake & Islands: Elev. 0.5' NAVD
- 12 Exercise Cluster
- 13 Meadow
- 14 Open Play
- 15 Overlook
- 16 Pavilions
- 17 Linear Water Feature
- 18 Park Signage
- 19 Maintenance Area
- 20 Trash Collection

-  Trail System (5')
-  Jogging / Maintenance /  
Emergency Path (10')  
Levee Elev. +4.60' IAVD










# NEIGHBORHOOD WATERSHED AND PARK DRAINAGE





# STORMWATER MANAGEMENT DIAGRAM

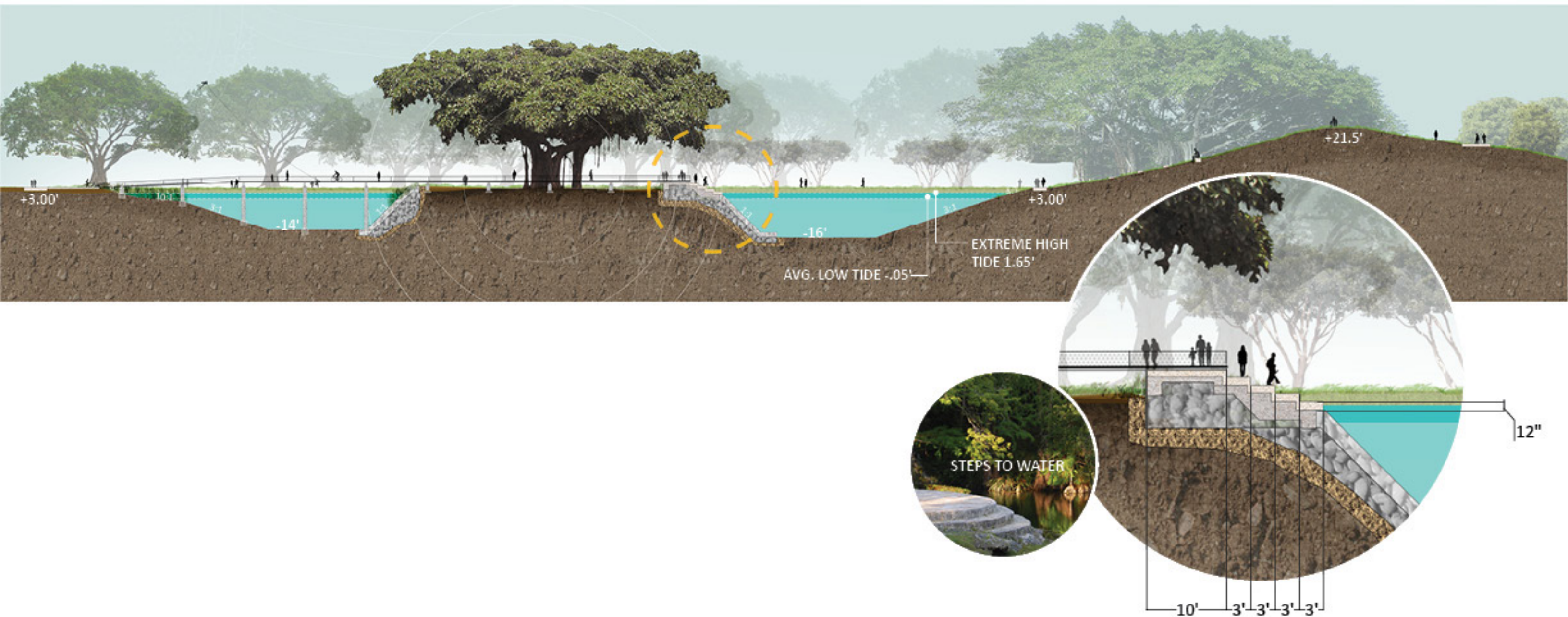
## LEGEND

-  Stormwater Run-off from Central Bayshore South Watershed
-  Levee - Flood Perimeter +4.60' NAVD  
(10' Wide Jogging / Maintenance / Emergency Path)
-  Lake at Normal Water Level -0.5' NAVD
-  Neighborhood Stormwater at Max Flood Elevation +4.55' NAVD
-  Retention/Detention Module





# ISLAND SECTION





# BRIDGE ACROSS LAKE



Key Plan



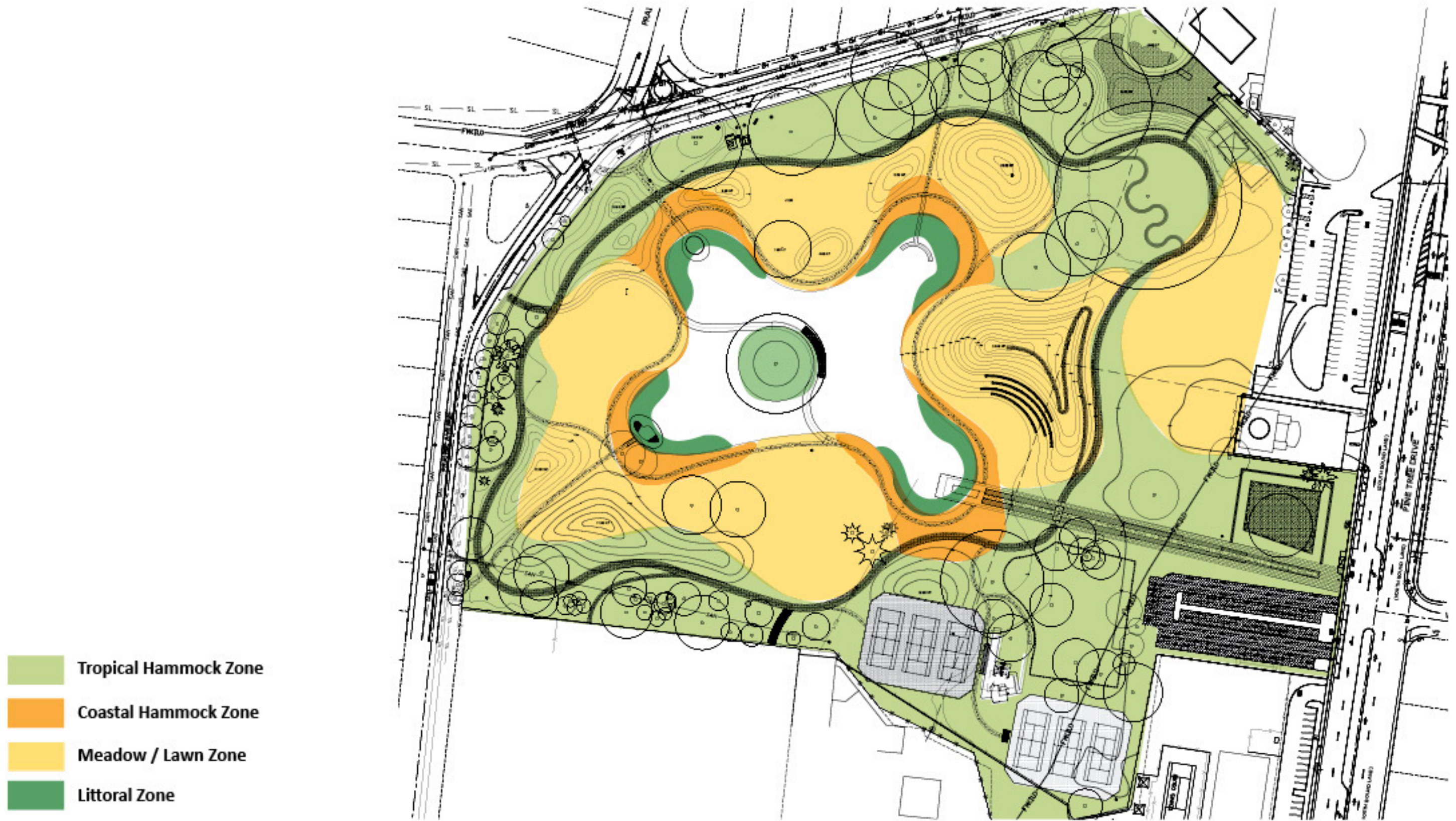
MATERIALS



Recycled Plastic Planks & Metal Railing with Mesh



# PLANT COMMUNITIES





# PLANT COMMUNITIES



*Quercus virginiana* /  
Live Oak



*Bursera simaruba* /  
Gumbo-limbo



*Swietenia mahogani* /  
Mahogany



*Roystonea elata* /  
Florida Royal Palm



*Lysiloma latisiliquum* /  
Wild Tamarind



*Psychotria nervosa* /  
Wild coffee



*Nephrolepis biserrata* /  
Sword fern



*Borrchia frutescens* /  
Sea Ox-eye Daisy



*Solidago sempervirens* /  
Seaside Goldenrod



*Juncus roemerianus* /  
Black Needle Rush



*Spartina alterniflora* /  
Smooth Cordgrass



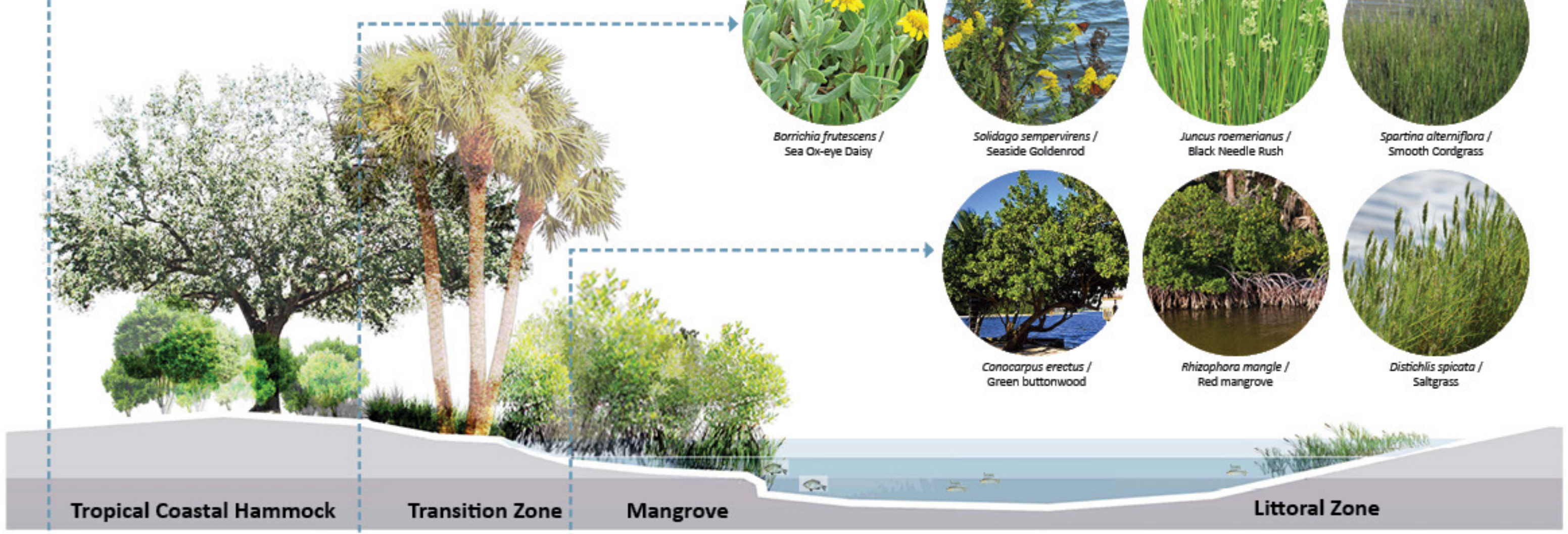
*Conocarpus erectus* /  
Green buttonwood



*Rhizophora mangle* /  
Red mangrove



*Distichlis spicata* /  
Saltgrass



Tropical Coastal Hammock

Transition Zone

Mangrove

Littoral Zone



## Pollinator Attractors / Bird Friendly



St. Augustine 'Floritam'



Mexican Clover



Creeping Charlie



Spanish Needles



*Asclepias curassavica* /  
Scarlet Milkweed



*Hamelia patens* /  
Firebush



*Callicarpa american* /  
Beautyberry



*Bouyeria succulenta* /  
Bahama strongbark



*Lantana involucrata* /  
Wild-sage



*Psychotria Nervosa* /  
Wild Coffee





# OPEN LAWNS

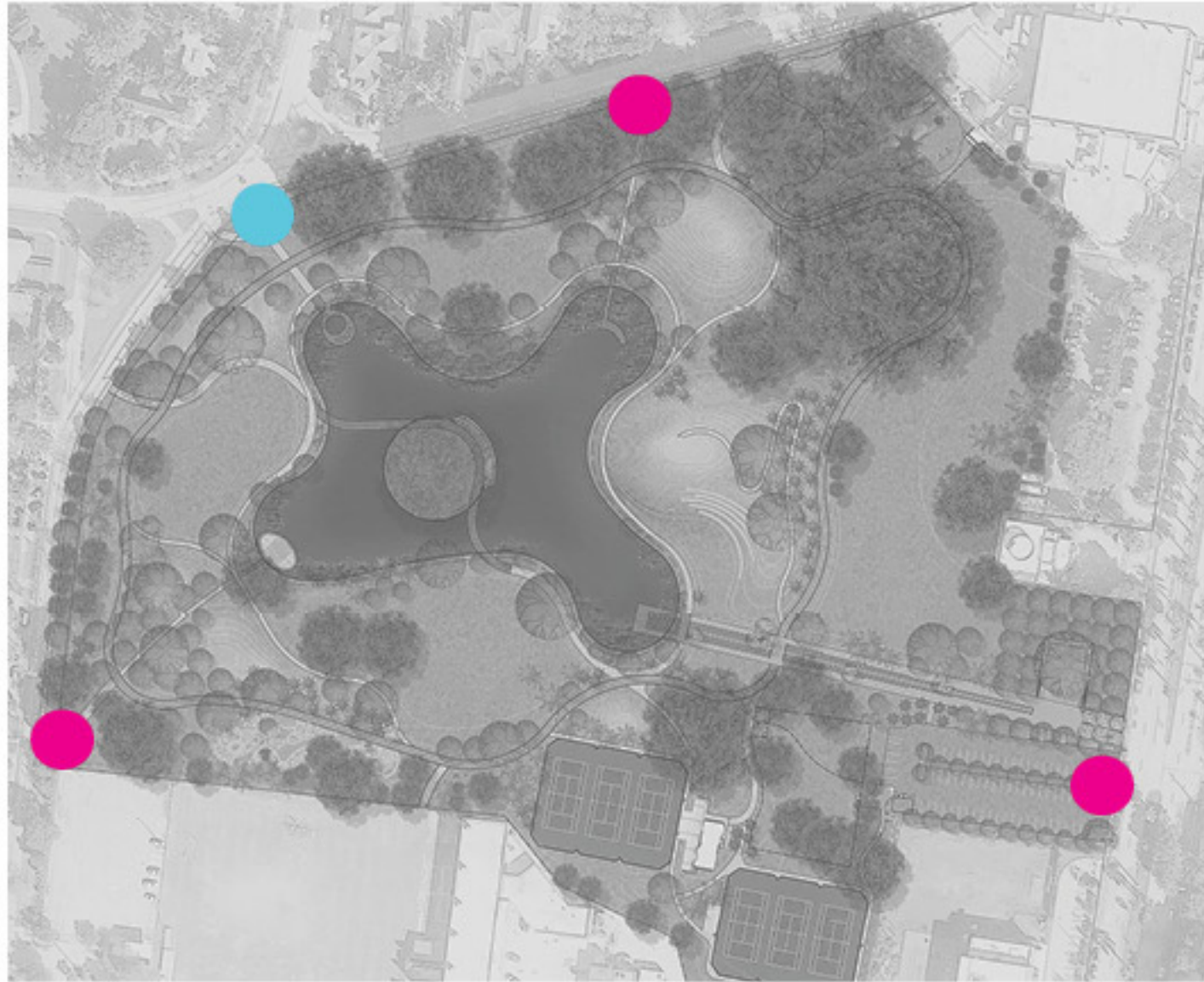


Key Plan





Sign Locations



- Sign Type A
- Sign Type B

Customized Font



Lasercut Signage Example



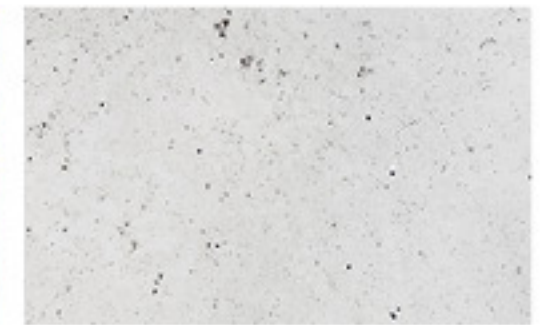
Materials



Stainless Steel for Sign



Limestone for Sign Base (Opt. 1)

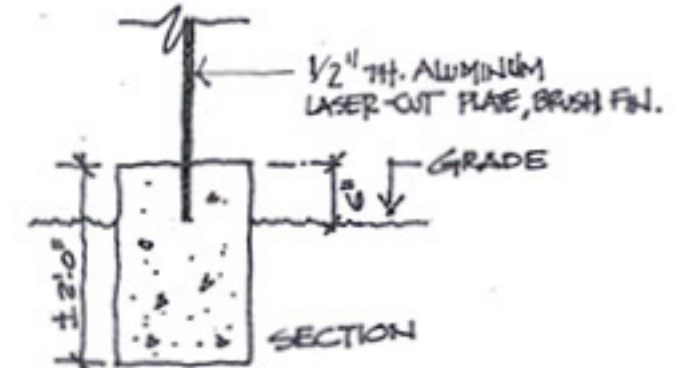
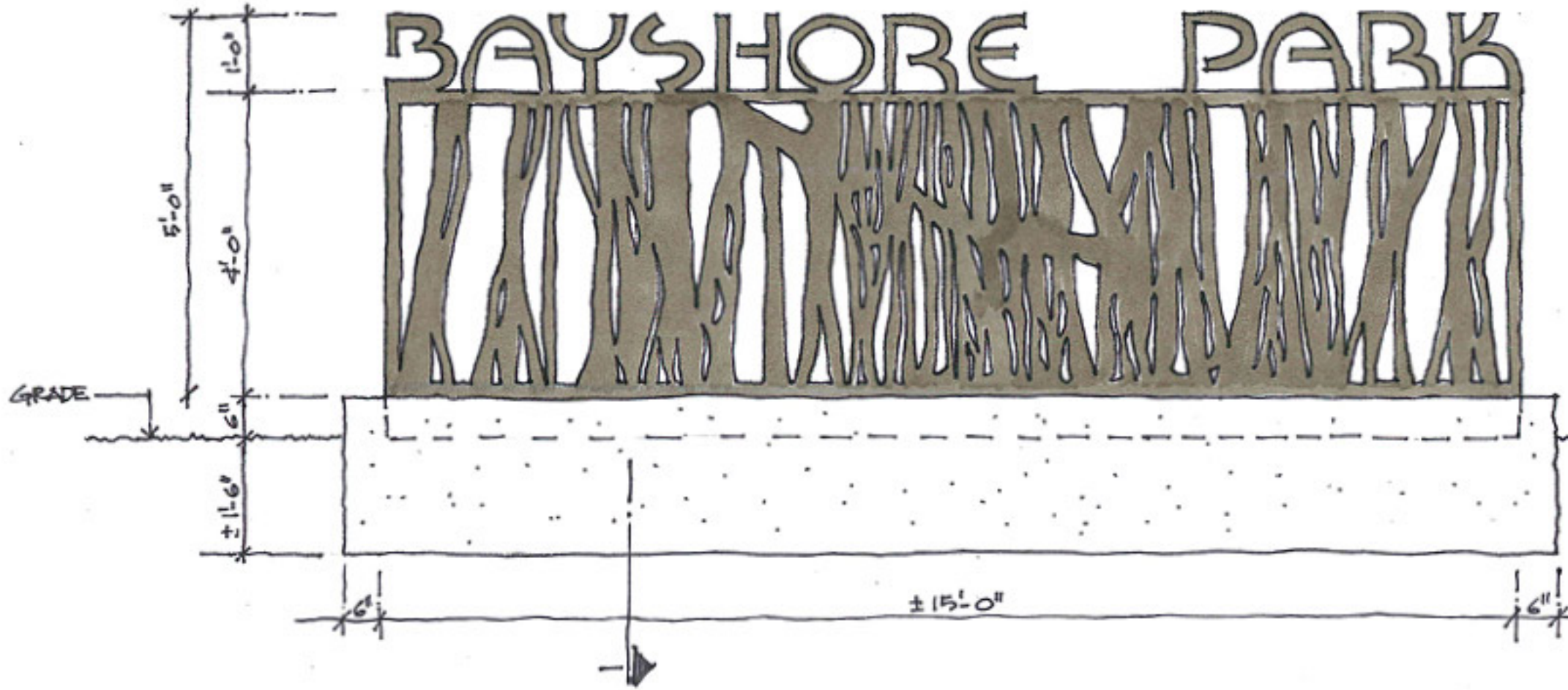


Concrete for Sign Base (opt. 2)



Sign Type A

SIGNAGE



Sign Base Detail

Sign Type B



Inspired by Bayshore Park Banyan Trees





# NORTHWEST ENTRANCE





# NORTHWEST ENTRANCE



Key Plan



Enlargement Plan





# NORTHEAST ENTRANCE



Key Plan





# EAST ENTRANCE AT PARKING LOT



## Key Plan



## MATERIALS



Belgard AQUA-BRIC  
permeable pavers



# SOUTHWEST ENTRANCE



Key Plan





# PLAYGROUND



## Key Plan



## MATERIALS



Equipment Colors & PIP Rubber

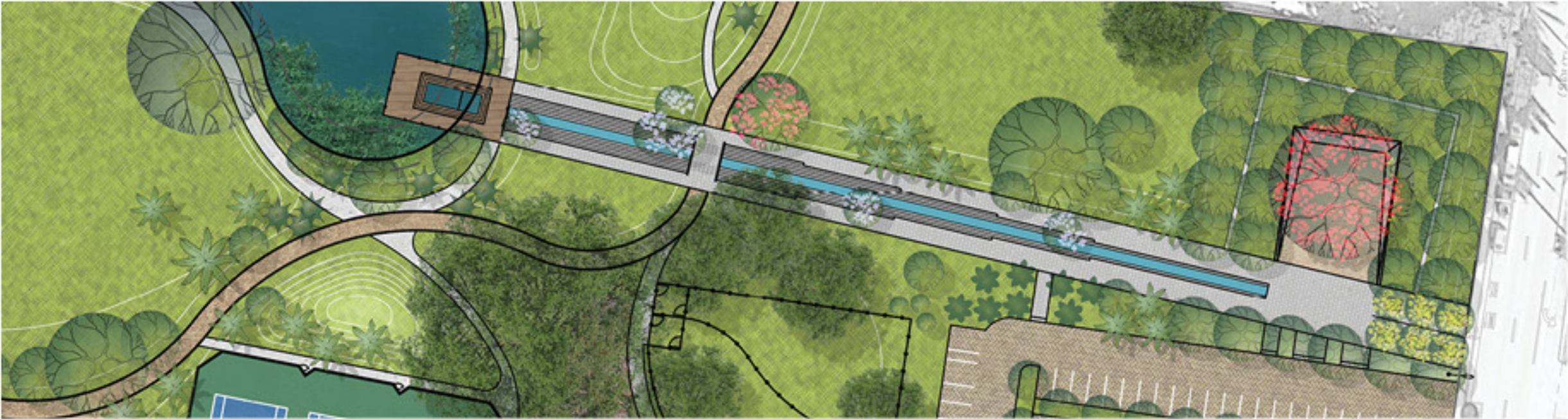
## ENLARGEMENT PLAN





# EAST ENTRANCE

Enlargement Plan



Key Plan



Entry Plaza



Dock





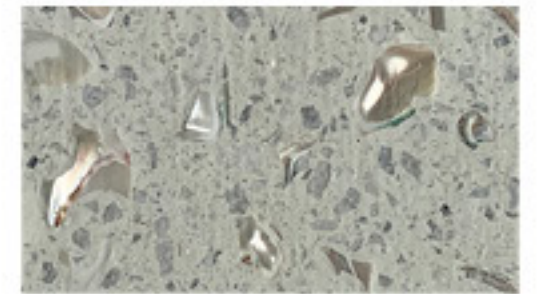
# WATER FEATURE



## Key Plan



## MATERIALS



Concrete Paver with Shell Aggregate



River Rock



# AMPHITHEATER

Key Plan





# BUTTERFLY GARDEN, SOUTH SIDE



## Key Plan



## MATERIALS



10' wide jogging / maintenance loop  
Stabilized Coquina Sand



5' wide paths  
Concrete with Salt Finish



# EXERCISE CLUSTER

# JORGE EXPOSITO DOG PARK



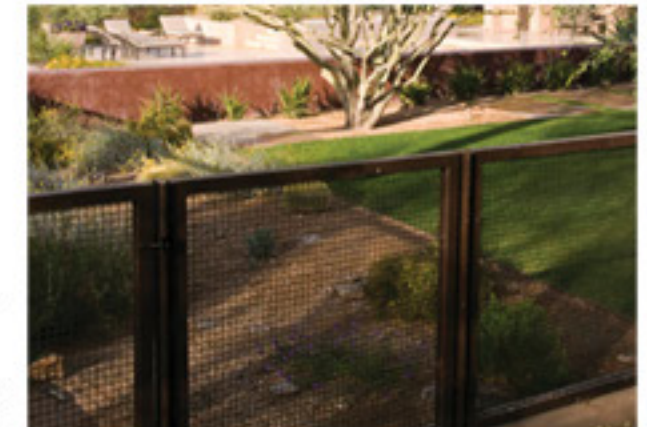
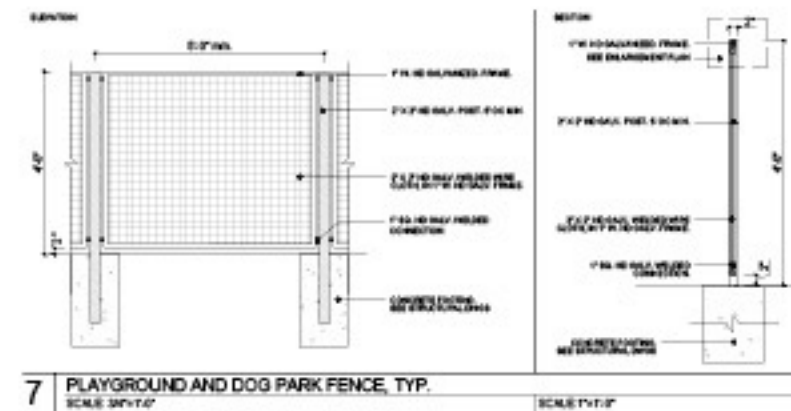
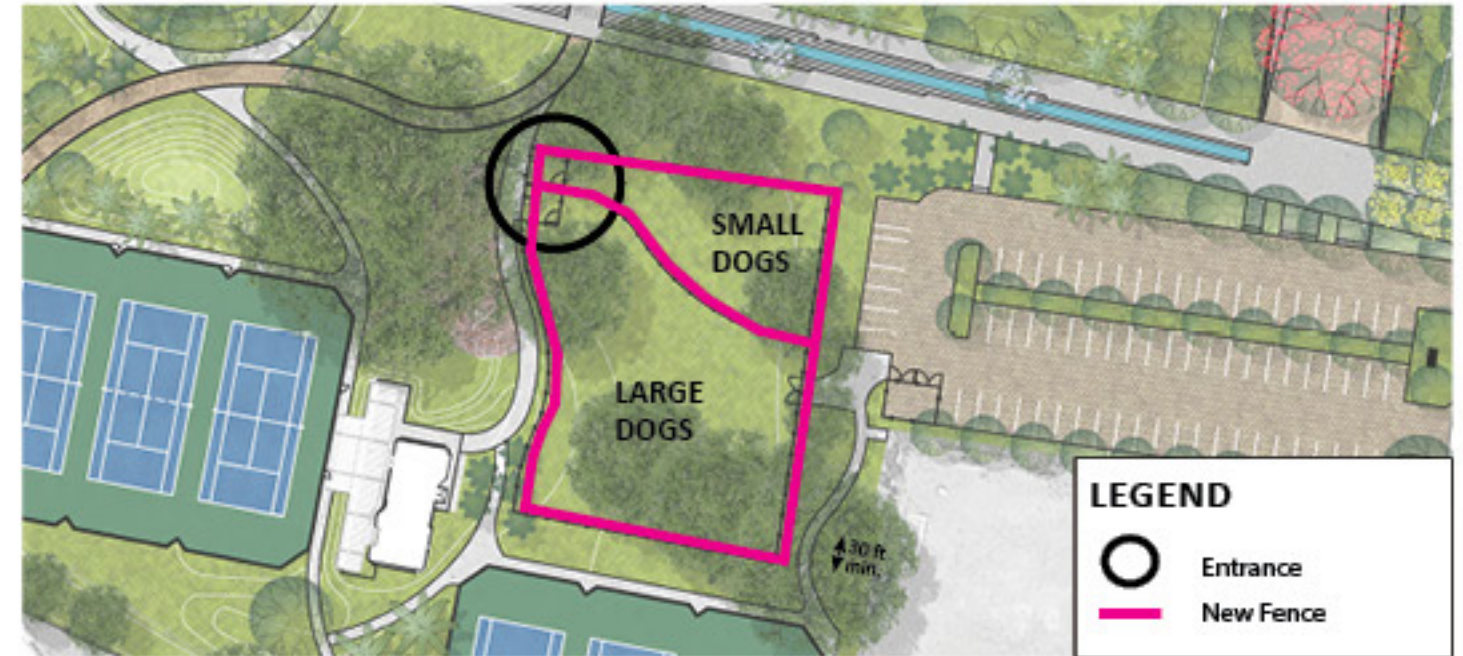
Key Plan



MATERIALS



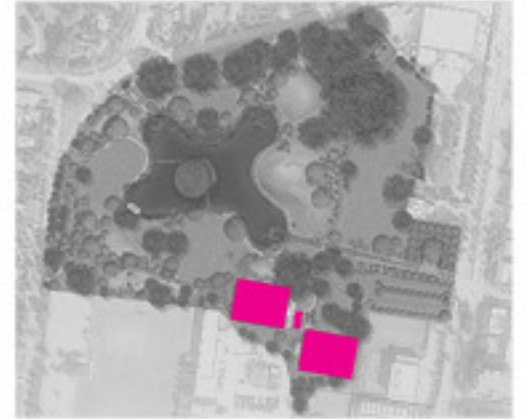
Key Plan





# TENNIS

## Key Plan



## COURT COLORS



MIAMI OPEN COLORS:  
BISCAYNE BLUE & OASIS BLUE

## FENCE



FENCE CONFIGURATION



FENCE DETAIL



WIND SCREEN

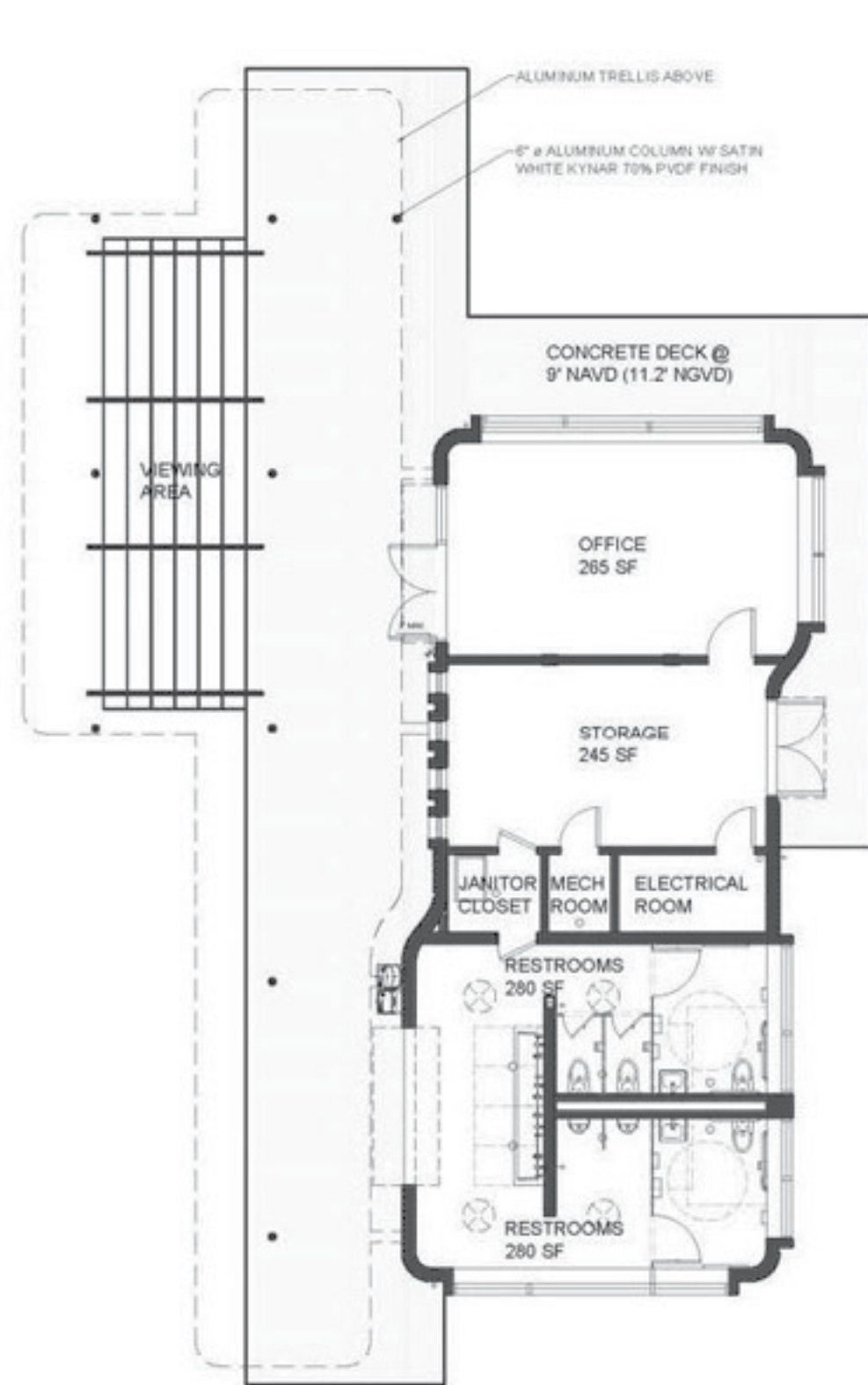


— PROPERTY LINE

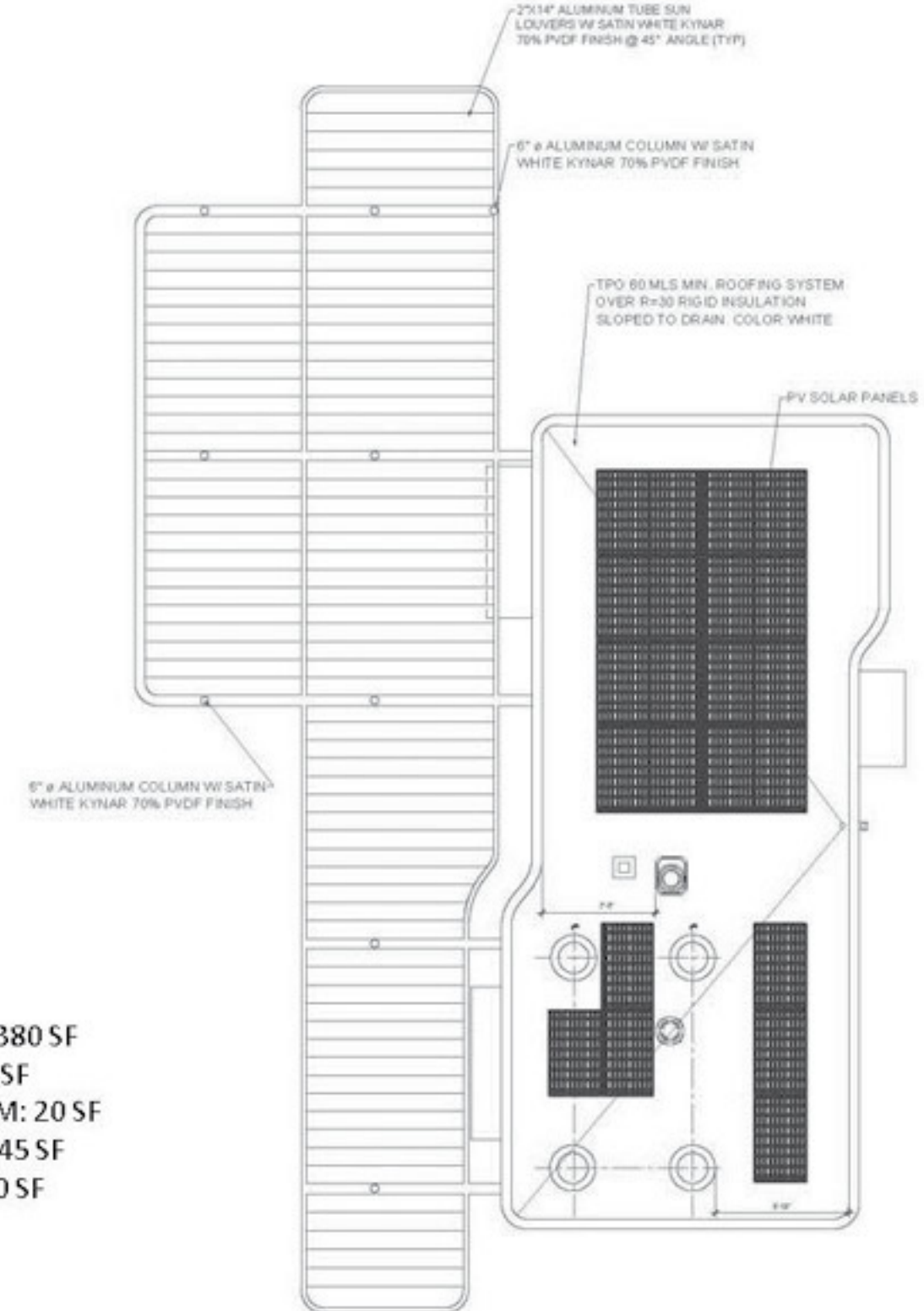
- - - - - FENCE



# TENNIS FACILITY

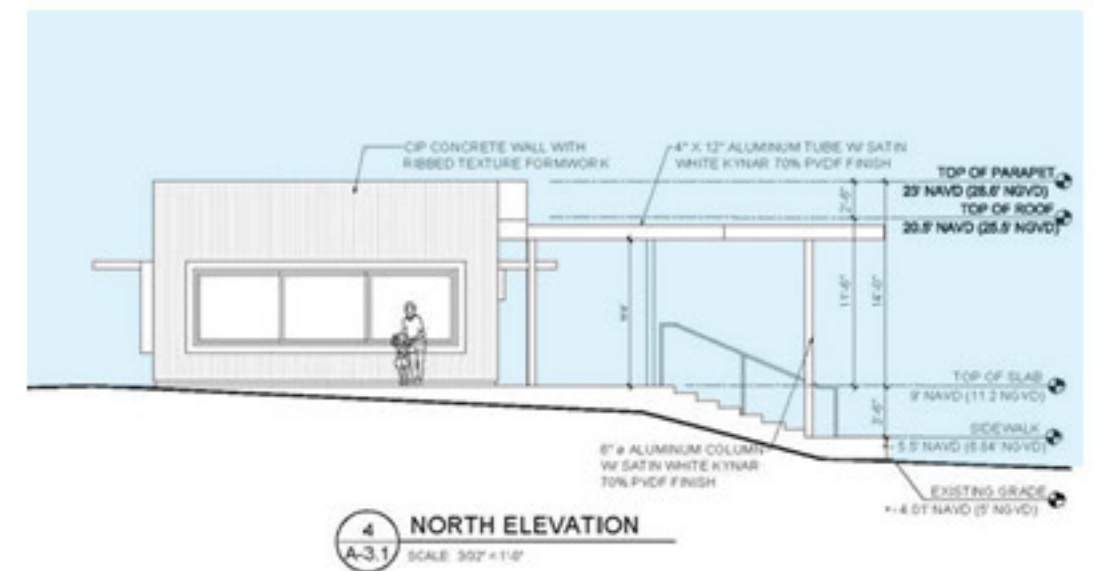
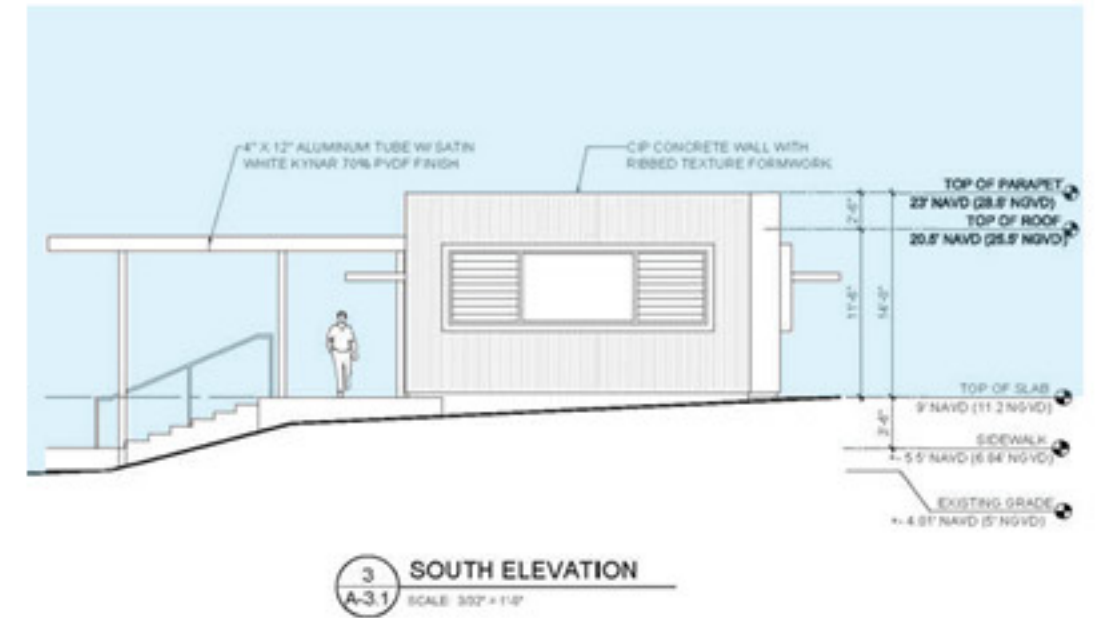


1. WOMEN'S ROOM: 380 SF
2. MEN'S ROOM: 380 SF
3. MECHANICAL ROOM: 20 SF
4. STORAGE ROOM: 245 SF
5. JANITOR CLOSET: 30 SF
6. SHADED AREA





# TENNIS FACILITY





# TENNIS FACILITY



## Key Plan



## MATERIALS



Paint Finish:  
Sherwin Williams 6715



Paint Finish:  
Sherwin Williams 9047



Fluted Concrete Panels



# SHADE STRUCTURE



## Key Plan



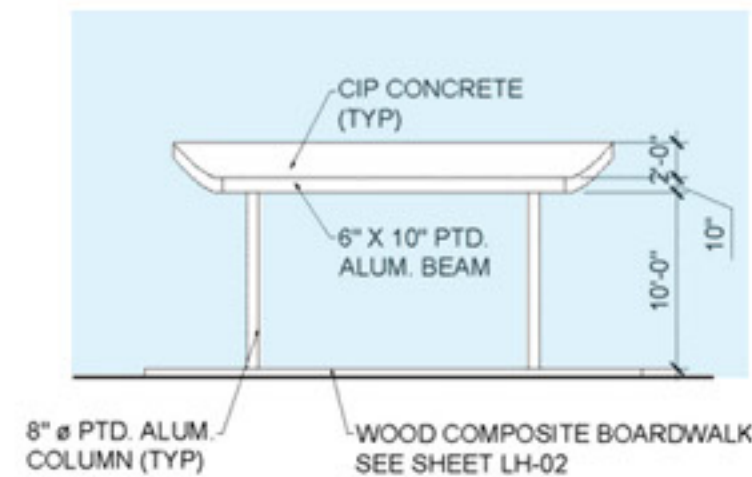
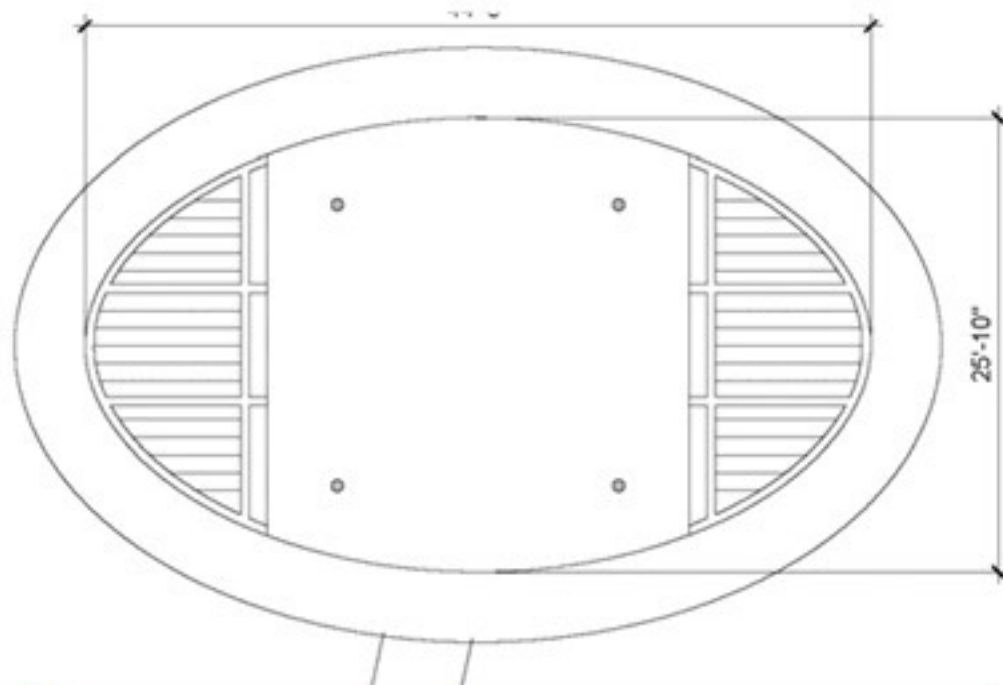
## MATERIALS



Paint Finish:  
Sherwin Williams 6715



Board Formed Concrete





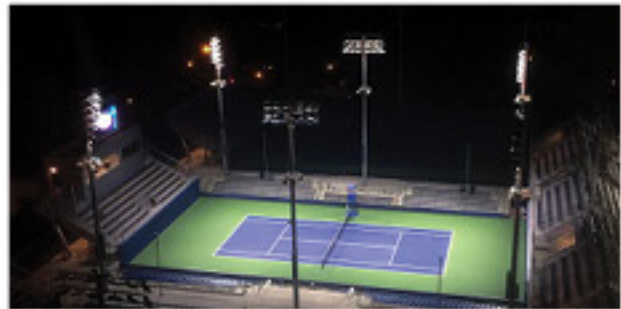
# LIGHTING FIXTURES



PARKING LOT  
MIRADA



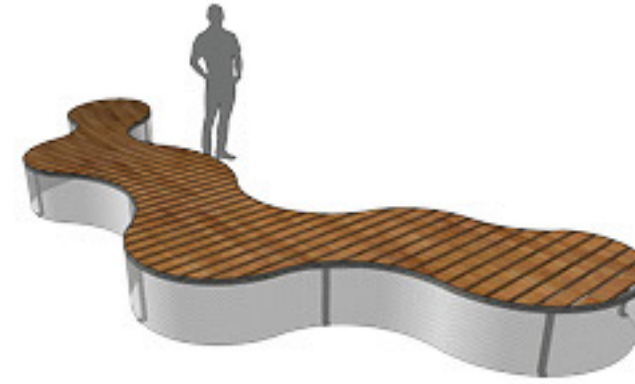
ENTRY / SERVICE / JOGGING PATH  
MINI MARGO BY RAGNI



TENNIS LIGHTS  
MUSCO



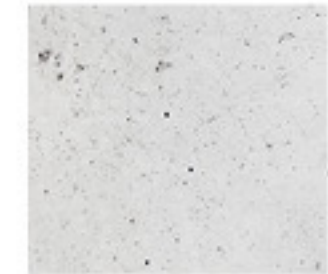
# SITE FURNITURE



## MATERIALS



Proposed Materials



CONCRETE



STONE



METAL



WOOD



THANK YOU!