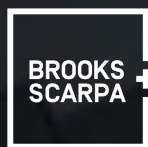


# MIAMI BEACH 41 STREET CORRIDOR REVITALIZATION 41st Street Blue Ribbon Committee Project Update

08 June 2023



MIAMIBEACH

## PROJECT SCOPE

### THE PROJECT SCOPE INCLUDES:

- **Branded pavement** along the 41st Street corridor.
- Provide a **clear barrier-free path of travel** throughout the corridor.
- Most **Royal Palm trees remain** (no more than 15% removal) with **new canopy trees incorporated to increase shade** and comfortability along the corridor. 206 Florida Royal Palms are within the project area. Several will be scheduled for removal due to health or location.
- **Enhanced plantings incorporate native and drought tolerant species.** The planting areas will include irrigation and low maintenance landscape recommendations.
- **Potential removal of up to 18 on-street parking spaces** on 41st Street to widen sidewalk environment. 63 on-street parking spaces currently exist on the corridor. The proposed plan maintains 49. Removed parking spaces allow for enhanced sidewalk areas and integration of more shade trees within the corridor.
- **Potential removal of up to 9 on-street parking spaces** on side-streets alleviate pinch points and make room for bicycle corrals.
- Remaining **on-street parking has textured paving** to allow for potential expanded pedestrian activity while used to visually calm traffic.
- **No parking on-street parking is to be removed west of the canal/bridge at Biscayne Waterway.**
- **Incorporation of bicycle facilities** on Prairie Avenue and Royal Palm Avenue, within the project boundaries.
- **Integrated fixed seating (seat walls)** are designed to **enhance expanded sidewalk areas** at mid-block/intersections.
- **Lighting will be upgraded within the corridor.**
- **Incorporation of gateway elements and plaza features** mark entry and moments within the corridor to define a sense-of-place.

### THE PROJECT SCOPE DOES NOT INCLUDE:

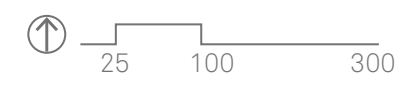
- **Traffic Signalization Changes** or reworking of traffic patterns.
- **Project does not include underground utility improvements.**
- **Project does not include drainage improvements.**

## PROPOSED PROJECT SCHEDULE

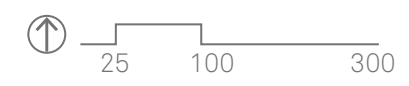
- 1. Design** Targeted completion by Spring 2024
- 2. Permitting** Targeted completion by Summer 2024
- 3. Procurement** Targeted completion by Winter 2024
- 4. Construction** Targeted to start in Winter 2024 with completion by Summer 2026



# EXISTING SITE PLAN



# PROPOSED SITE PLAN: WALKS AND OASES





PROPOSED



East of intersection between Garden Ave. and 41 St.





LED STREET LAMPS

ROYAL PALM WITH STRING LIGHTS

NATIVE GRASSES

BANDED PATTERN CONCRETE

SEAT WALL

# PROPOSED ROYAL PALM PALETTE

WITH EXPOSED  
ROOT BALL



EXISTING



PROPOSED

IF THE ROOT OF AN EXISTING ROYAL PALM ARE RAISED AND/OR CAUSING ISSUES, THEN A SEAT WALL WILL ENCLOSE THE TREE. FERNS OR SIMILAR RESILIENT PLANT SPECIES CAN INFILL THESE NEW PLANTERS

WITHOUT EXPOSED  
ROOT BALL



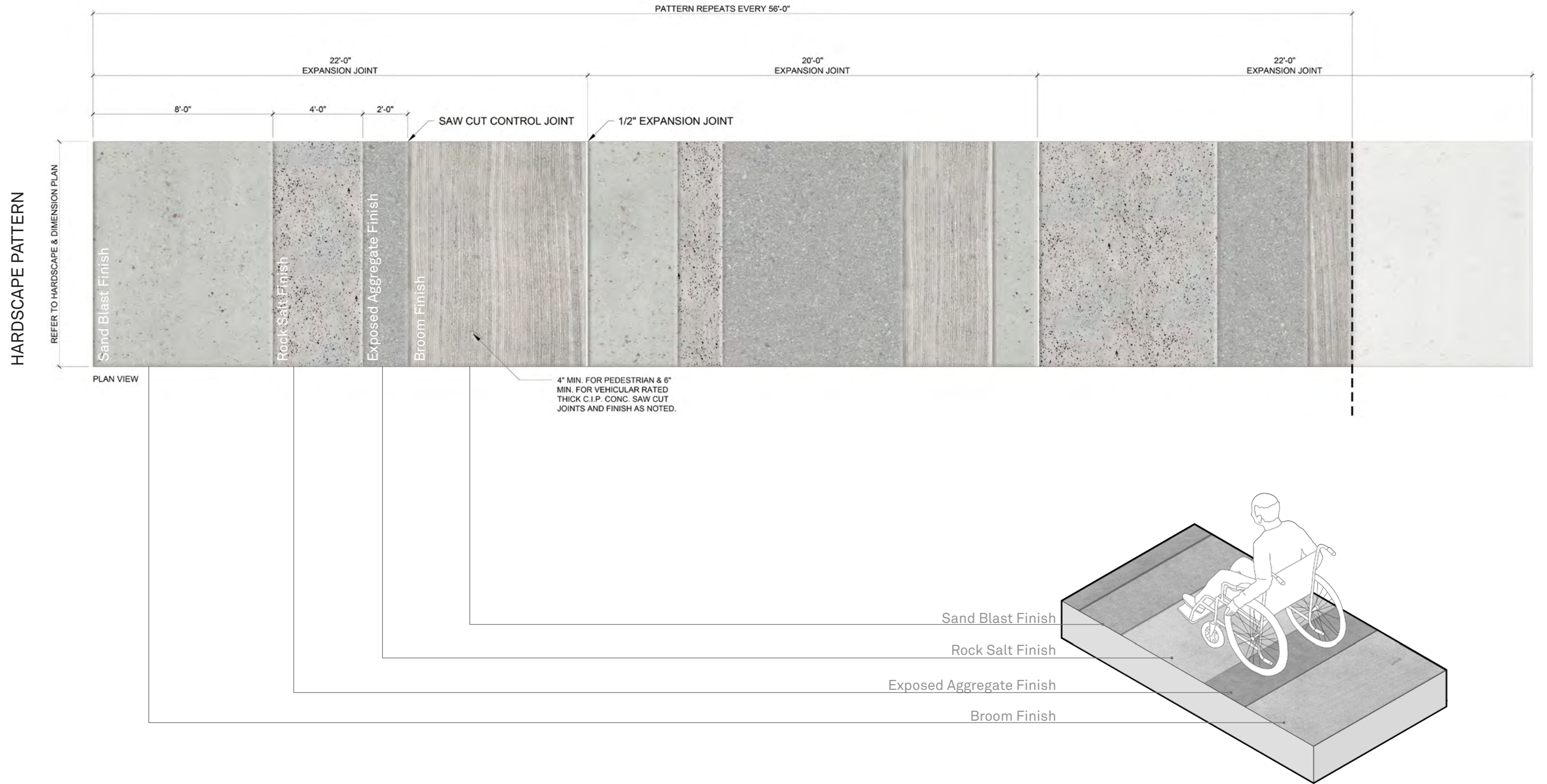
EXISTING



PROPOSED

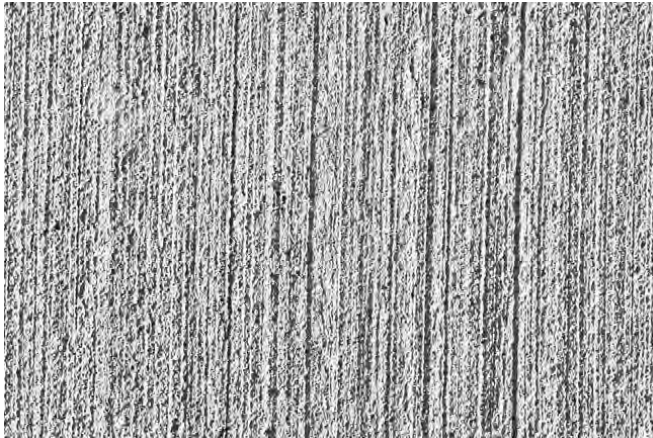
IF THE ROOT OF AN EXISTING ROYAL PALM ARE AT GRADE, THEN METAL GRATING BECOMES THE PRIMARY TOOL TO PROTECT THE TREE AND EXPAND THE WALKS

# PROPOSED PAVING | WALKS

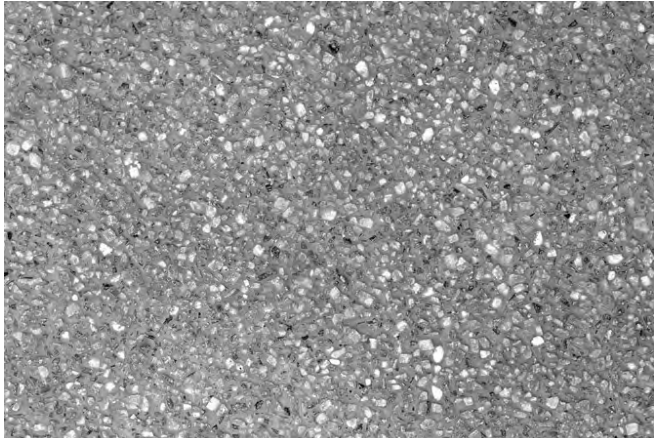


Diverse Textured Concrete Sidewalk

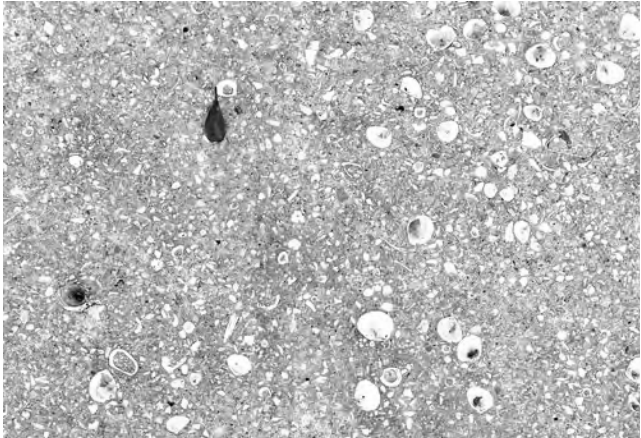
# PROPOSED PAVING | WALKS



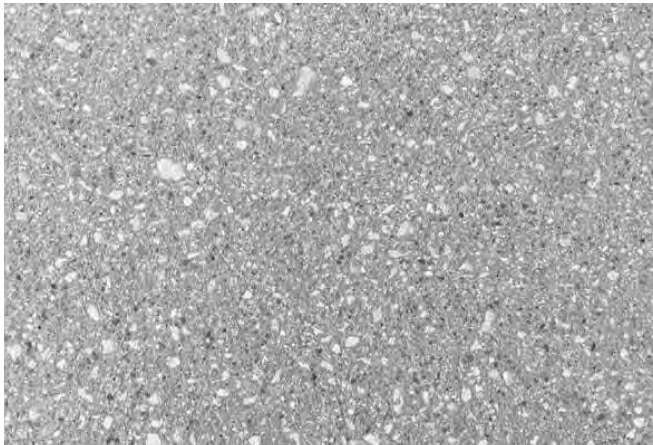
Broom Finish



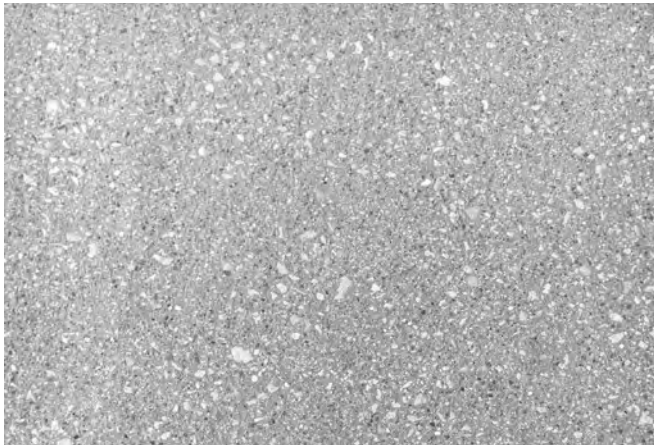
Exposed Aggregate



Seashell Aggregate



Heavy Sandblasted Finish



Light Sandblasted Finish



Towel Finish

# PROPOSED FURNITURE PALETTE | WALKS

EXISTING



Bike Rack



Trash Receptacles

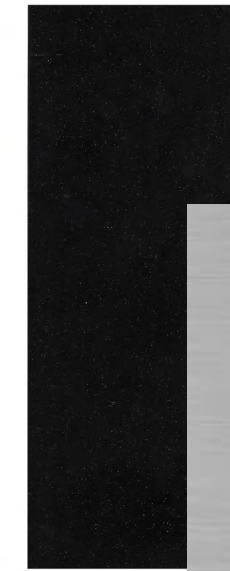


Benches



Street Lamp  
Type D CMB Public Works

REFINISHED STREET FURNITURE



Dark Bronze/Black Gloss Finish

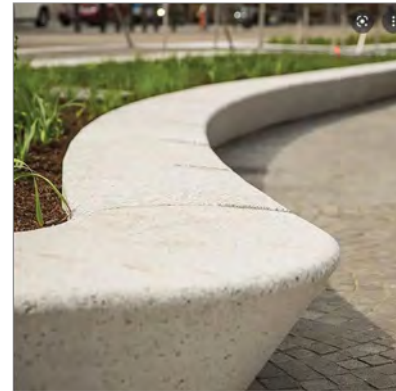


Stainless Steel/  
Aluminum Mill Finish



Landscape Forms  
*Milenio*

PRECAST SEAT WALLS



Wausau  
*Seat Walls*



A23Y

NEW



Design by Pininfarina

MIAMI BEACH BUS STOP



Existing





# PROPOSED STRING LIGHTS EVERY TREE | OPTION 1





PROPOSED STRING LIGHTS EVERY OTHER TREE | OPTION 2



# PROPOSED ADJUSTABLE ACCENT LIGHTS | OPTION 3





Midblock crossing between Prairie Ave. and Royal Palm Ave.



LED STREET LAMP

SHADE TREES

ROYAL PALM

MID-BLOCK GRAPHIC

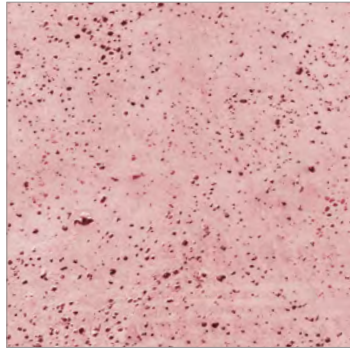
SEAT WALL

FOLIAGE

TEXTURED CONCRETE  
(ROCK SALT FINISH)

# PROPOSED PAVING | OASES

HARD SCAPE



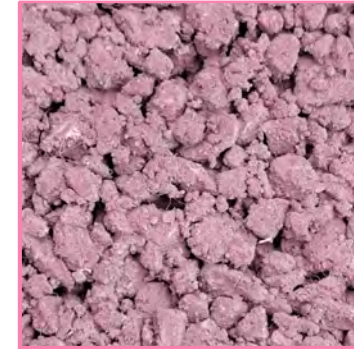
Miami Beach Red Concrete (Rock Salt Finish)



Metal Grates



SUSTAINABLE OPTIONS



Stormcrete



Prefabricated Elements



Cool Pavements

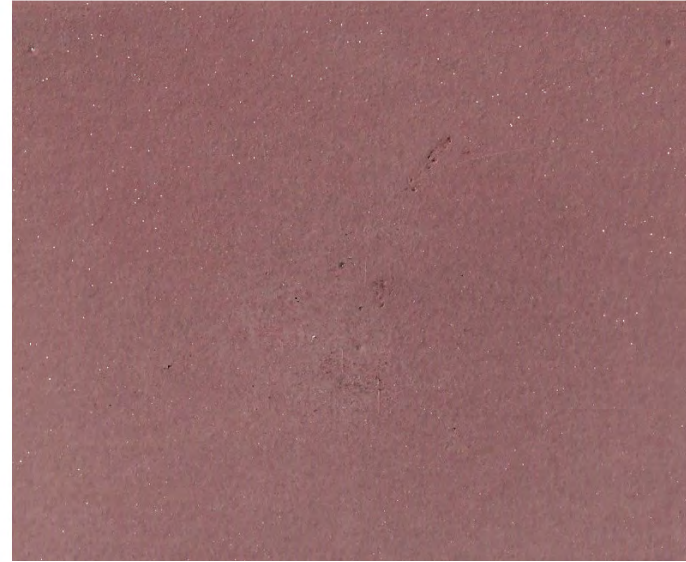
# PROPOSED PAVING OPTIONS | OASES



Raspberry RG2846R



Egyptian Red RG2835R



Granite Red 1395



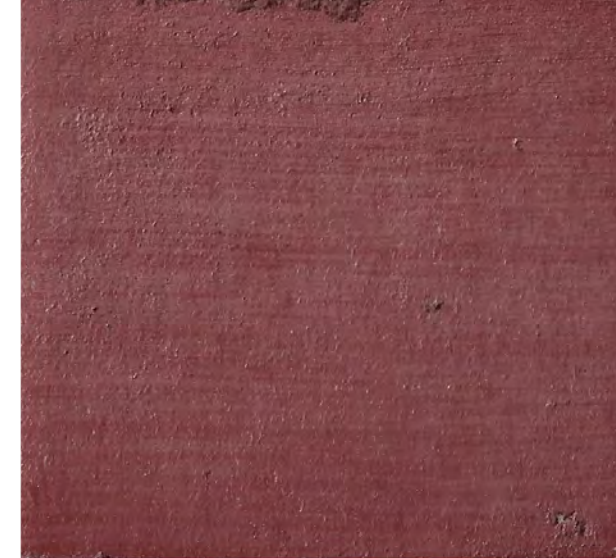
Tile Red 1117



Resin Bonded 1-3mm Red Granite



Miami Beach Red C-1530



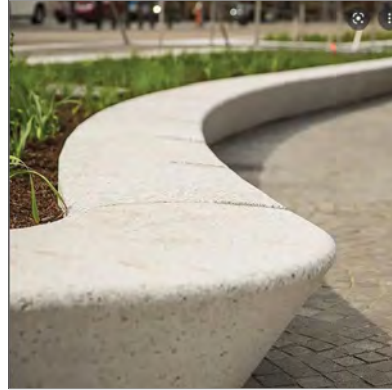
Musky Mulberry C-3450

# PROPOSED FURNITURE PALETTE | OASES

SEATING



Landscape Forms  
*Milenio*



Wausau  
Seat Walls



Escofet  
Fortunat

PIGMENTED SEAT WALL TO MATCH OASIS COLOR



A24Y

FURNITURE



Bike Rack  
*painted (marine grade)*

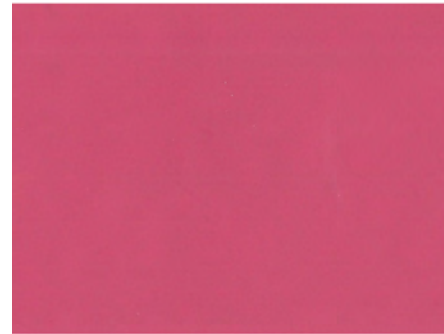


Trash Receptacles  
*painted (marine grade)*



Benches  
*painted (marine grade)*

PAINT FURNITURE TO MATCH OASIS COLOR

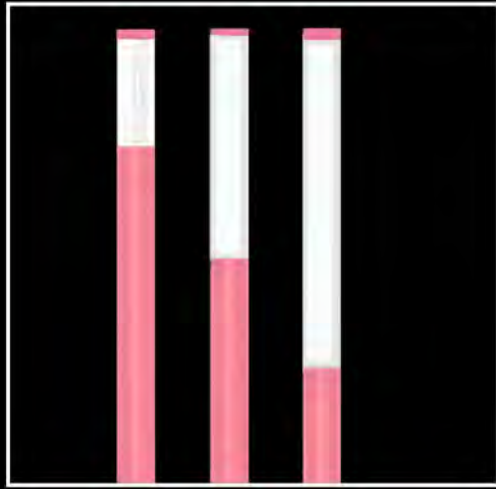


Dragon Fruit  
Sherwin-Williams  
#CC5575





# LIGHTING OPTIONS | OASES



Modern Light Garden  
*painted (marine grade)*

OPTION 1



Urban Branding  
*painted (marine grade)*

OPTION 2



Light Garden Loops  
*painted (marine grade)*

OPTION 3

**LUMINIS** CL620/CL640/CL670 SERIES  
LUMINISTIK  
6" COLUMN

TYPE	QUANTITY	PROJECT
CATALOG NUMBER		
PICTURE	LED LIGHT SELECTION	COLUMN VOLTAGE FINISH OPTION OPTION OPTION

**CL620/CL640/CL670**

- White cast aluminum top cover with recessed brass sink.
- 6" (2.0m) High pressure cast translucent acrylic diffuser UV resistant.
- LED array.
- 6" (2.0m) Extruded aluminum column.

**MATERIALS**  
Luministik Column is made of 6063-T5 extruded aluminum alloy. All other cast parts are composed of 304 aluminum alloy with a surface finish of 0.00125".

**FINISH**  
LED housing is finished in a white UV stabilized high impact acrylic sealed surface. The assembly is designed to provide a uniform column illumination.

**ELECTRICAL**  
Driver: Standard driver is 0-10V dimming ready (DTR) with 100-240V AC input. Output voltage is adjustable from 0V to 10V. Output current is 100mA. Output power is 10W. Output voltage range is 0V to 10V. Output current range is 0mA to 100mA. Output power range is 0W to 10W. Output voltage range is 0V to 10V. Output current range is 0mA to 100mA. Output power range is 0W to 10W. Output voltage range is 0V to 10V. Output current range is 0mA to 100mA. Output power range is 0W to 10W.

**ORDERING INFORMATION**

MODEL	CCT	DISTRIBUTION	VOLT	FINISH (P/N)
CL620/CL640/CL670	3000K	T2	100-240V	SG
	4000K	T3		SG
	5000K	T4		SG
	6500K	T5		SG
	8000K	T6		SG
	9000K	T7		SG
	10000K	T8		SG

**CITY ELEMENTS**  
Illuminating Top Module - FR800

**DESCRIPTION**  
City Elements FR80 offers design professionals the flexibility of a multi-purpose lighting system in a single architectural structure. It may be configured with a single top element for area lighting and may include up to two additional lighting modules directly below for accenting or highlighting of facade, landscaping, or signage. Column may be specified with height up to 1600mm. A composite ballast is also available. Housing styles for the top element may be with 30° beam with a choice of symmetric or asymmetric reflector or an asymmetric housing for beam side shading. Luminis housing and extruded aluminum shaft with flush hardware are finished in finely textured paint. All hardware is stainless steel.

**ORDERING INFORMATION**

MODEL	CCT	DISTRIBUTION	VOLT	FINISH (P/N)
FR800	3000K	T2	100-240V	SG
	4000K	T3		SG
	5000K	T4		SG
	6500K	T5		SG
	8000K	T6		SG
	9000K	T7		SG
	10000K	T8		SG

**Typology Ring Light**  
Spec Sheet | CL000

**Housing & Materials**  
Cast aluminum construction. Flexible LED light engine is clamped into fixture housing with aluminum segmented pins. Housing features a spun aluminum glass white powdercoated reflector. All hardware is chrome plated steel.

**Electrical**  
Range powered 120V through 277V 60/50Hz electronic driver. 0-10V dimming. -40°C start temperature. Cast aluminum driver housing assembly located at top of pin. Available with optional ANSI C136 at test lock receptacle or Watstopper PIP-3118 photo/motion sensor.

**Light Engine**  
Fully encapsulated flexible linear LED fixture delivers downward direct and indirect lighting in conjunction with the glass white metal reflector. A 90° compliant conical beam is included. Available in 2700K, 3000K, 3500K, and 4000K. 160 CRI across all available color temperatures.

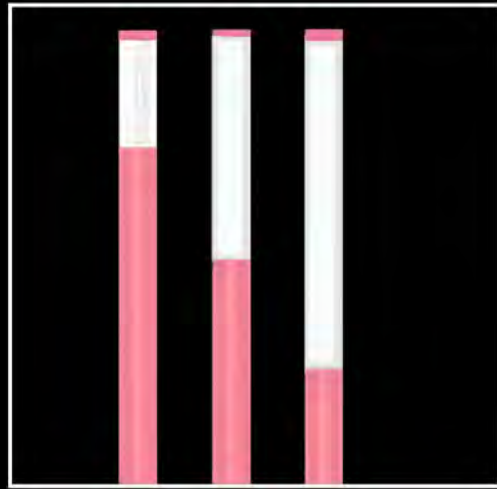
**Certification**  
UL Listed for 90° Location, CE, International Dark Sky Approved, RoHS America Compliant, RoHS Compliant

**Warranty**  
LED lighting products are warranted for six years.

**Weight:** 485g (Borrnraute and driver housing)  
**SKU:** L54847  
**TM21 L70100:** 60,000hrs  
**Protection Class:** IP67

# LIGHTING OPTION 1

LIGHT PALETTE



Modern Light Garden  
*painted (marine grade)*

**LUMINIS** CL620/CL640/CL670 SERIES LumiiSTIK 6" COLUMN

TYPE	QUANTITY	PROJECT
DETAILS		
FEATURES	LED LIGHT SOURCE	COLUMN VOLTAGE FINISH OPTION OPTION OPTION

**MATERIALS**  
LumiiSTIK is made of 6061-T6 anodized aluminum alloy. All other cast parts are made of 6061-T6 aluminum alloy with a clear anodized finish. The luminaire is made of 6061-T6 aluminum alloy with a clear anodized finish. The luminaire is made of 6061-T6 aluminum alloy with a clear anodized finish. The luminaire is made of 6061-T6 aluminum alloy with a clear anodized finish.

**ELECTRICAL**  
Standard driver is 5VDC driving LEDs (10W) with 100-277VAC input (operating 120-277VAC). Luminaire temperature range is 10°C to 40°C. For more information, please contact us at 800-556-6647.

**LIFE**  
100,000 hours (based on IESNA TM-21 Test Method and LM-80 data).

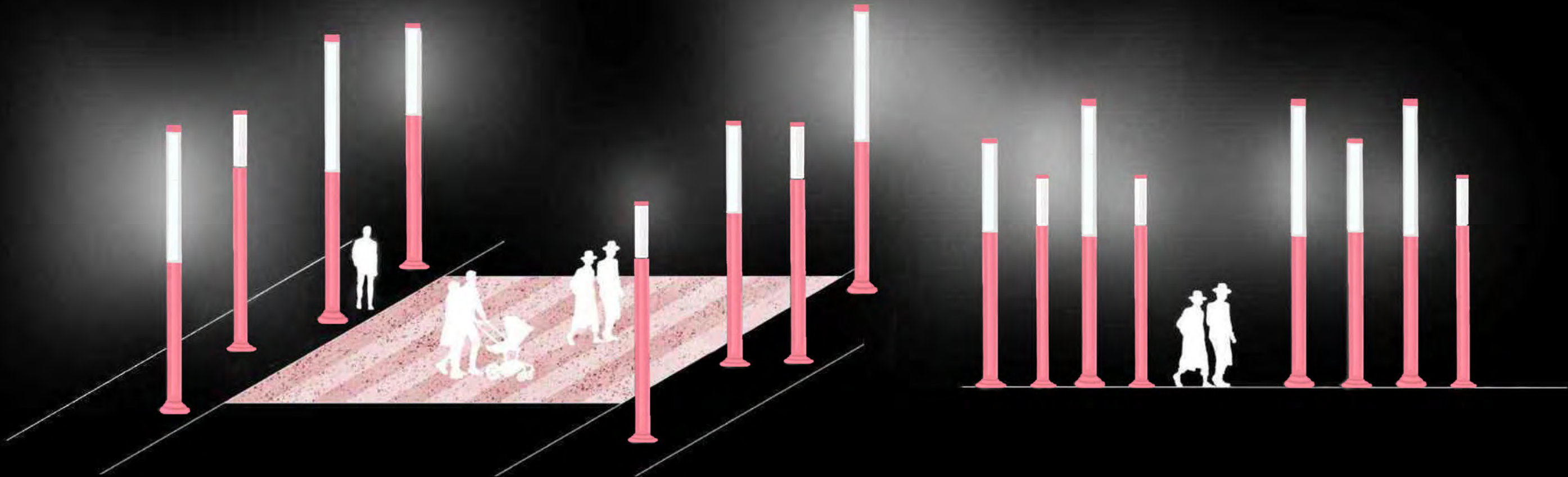
**FINISH**  
The luminaire is finished with a clear anodized finish. For an alternative finish, please contact us at 800-556-6647.

**CERTIFICATION**  
LumiiSTIK is certified to meet the requirements of the International Electrotechnical Commission (IEC) and the International Commission on Illumination (CIE). LumiiSTIK is certified to meet the requirements of the International Electrotechnical Commission (IEC) and the International Commission on Illumination (CIE).

LUMINIS | Toll free: 800-556-6647 | Fax: 561-852-8872 | Email: info@luminis.com  
300 Wilfredo Street, Suite 200, Coral Gables, FL 33134

LUMINIS  
LumiiSTIK

LIGHT GARDENS





# LIGHTING OPTION 2

LIGHT PALETTE



Urban Branding  
*painted (marine grade)*

CITY ELEMENTS  
Illuminating Top Module - PR899

**DESCRIPTION**  
City Elements offers design professionals the flexibility of a multi-purpose lighting system in a single architectural structure. It may be configured with a single top element for area lighting and may include up to two additional lighting modules directly below for accenting or highlighting of landscape, landscaping, or site/courtyard. Custom may be specified with heights up to 80" in height. A component kit is also available. Housing Option for the top element may be with "30" steel with a choice of finishes or aluminum. Reflectors are an optional housing for house color matching. Landscape housing and activated aluminum shaft with flush hardware are finished in finely textured paint. All hardware is stainless steel.

**PRIMAR**

Order \_\_\_\_\_, Item \_\_\_\_\_, Catalog Number \_\_\_\_\_  
Project Name \_\_\_\_\_

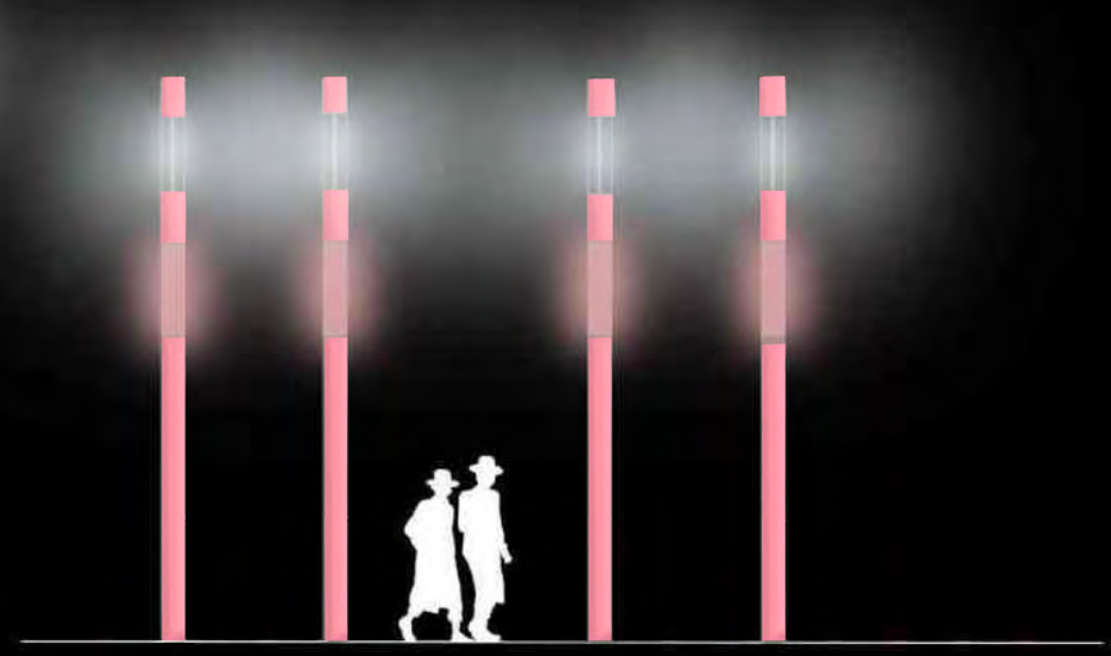
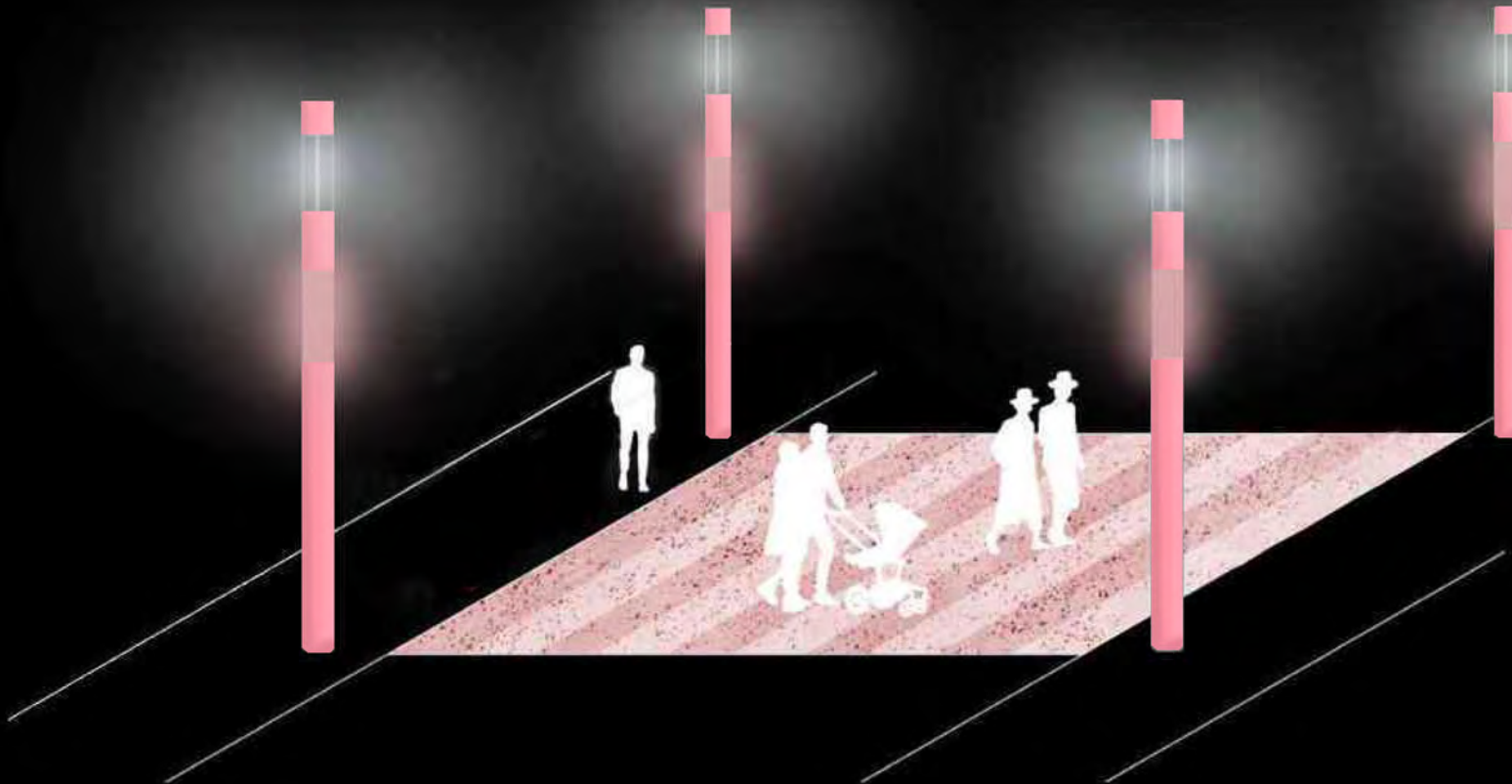
**ORDERING INFORMATION**

MODEL	CCT	DISTRIBUTION	VOLT	PRDR (Primar®)
CE200-800-60K-0100	90	T3	100	OS
CE200-800-60K-0100	90	T3	120-277V	OS
CE200-800-60K-0100	90	T3	100	OS
CE200-800-60K-0100	90	T3	100	OS
CE200-800-60K-0100	90	T3	100	OS
CE200-800-60K-0100	90	T3	100	OS
CE200-800-60K-0100	90	T3	100	OS
CE200-800-60K-0100	90	T3	100	OS
CE200-800-60K-0100	90	T3	100	OS
CE200-800-60K-0100	90	T3	100	OS
CE200-800-60K-0100	90	T3	100	OS
CE200-800-60K-0100	90	T3	100	OS
CE200-800-60K-0100	90	T3	100	OS
CE200-800-60K-0100	90	T3	100	OS

**EXPERIENCE**

.hess  
City Elements

LIGHT GARDENS





# LIGHTING OPTION 3

LIGHT PALETTE



Light Garden Loops  
*painted (marine grade)*

**Typology Ring Light**

Spec Sheet | 10/21/20

**Housing & Materials**  
Cast aluminum distribution. Flexible LED light engine is clamped into fixture housing with aluminum segmented pins. Housing features a cast aluminum glass white polycarbonate reflector. All hardware is anodized aluminum.

**Electrical**  
Single powered 120V through 277V (3000mA) electronic driver. 0-10V dimming. -40°C start temperature. Cast aluminum driver housing assembly mounted at top of pole. Available with optional 8000 200mA heat lock receptacle or WattsUpper PDP-20100 photoelectric sensor.

**Light Engine**  
Full spectrum flexible linear LED fixture delivers downward direct and indirect lighting in conjunction with the glass white metal reflector. 4000K compact central beam is included. Available in 2700K, 3000K, 3500K, and 4000K. 180 CRI across all available color temperatures.

**Distribution**  
TV

**Warranty**  
LED lighting products are warranted for six years.

**Certification**  
UL Listed for Wet Location, CE, International Dark Sky Approved, RoHS American Council on Education, RoHS Compliant

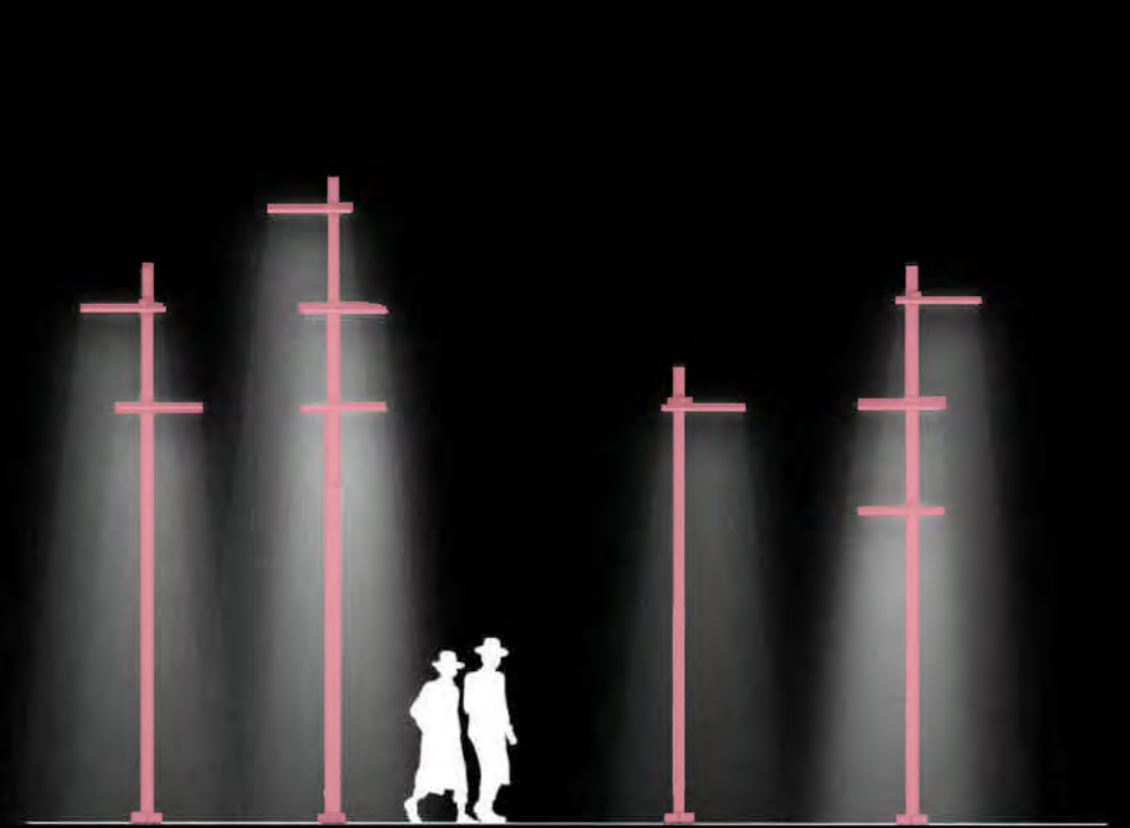
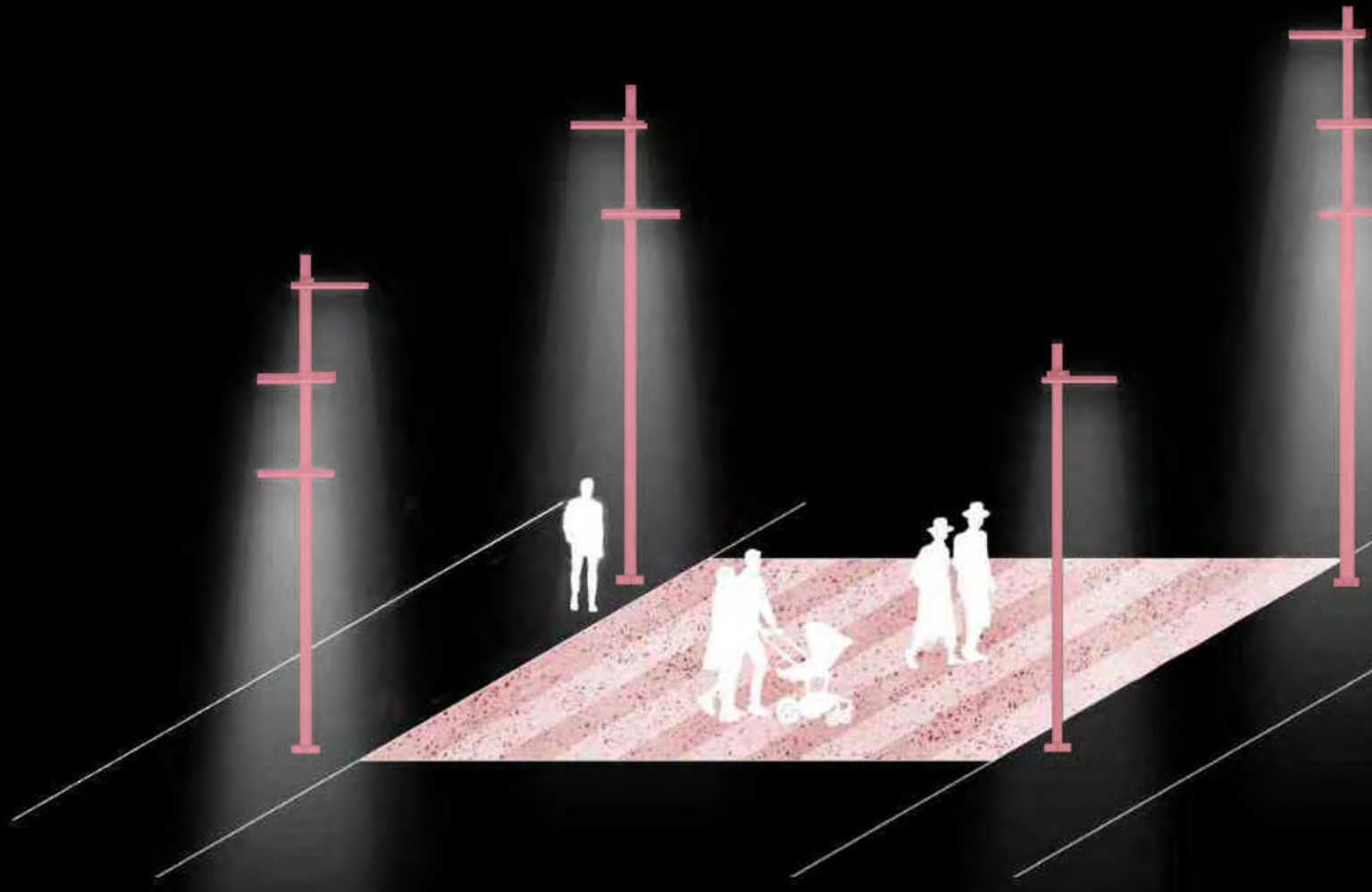
**Dimensions**  
Height: 60" (luminaire and driver housing)  
DPA: 1.5kW  
TM21 L70/TM21 80,000hrs  
Protection Class: IP67

Designed by Designworks, a BMW Group company  
[Click here for product information related to this product.](#)

Revised January 17, 2022 | Landscape Forms Inc. | 800.527.2546 | P. 230.387.5450 | 7602 E. Michigan Ave., Kalamazoo, MI 49008

Landscapeforms  
Typology Ring Light

LIGHT GARDENS







**MICRO NITE STAR LED** IP66 RATED

DATE: PROJECT: FILE:

CATALOG NUMBER LOGIC:

**CATALOG NUMBER LOGIC:**  
Example: B-MN-LED-e88-SP-WHP-12-1-A-360LS

**MATERIAL:**  
Options: Aluminum, B-Brass

**SERIES:**  
MN - Micro Nite Star

**SOURCE:**  
LED - with Integral Dimming Driver (25W min. load when dimmed?)

**LED TYPE:**  
e87 - 7W LED/2700K e88 - 7W/3000K 80 CRI  
e88 - 7W LED/3000K e85 - 7W/3000K 90 CRI  
e88 - 7W LED/4000K e84 - 7W/3000K 80 CRI  
e85 - 7W LED/Amber

**SPICE:**  
SP - Spot (17°) MFL - Medium Flood (25°) FL - Flood (30°)

**FINISH (See page 2 for full color available):**  
Standard Finish (SD): CON, SLP, WHP, WAK, SLP, YER  
Premium Finish (AP): AMI, AQW, BCM, BGE, BPP, CAP, CML, CMA, HUL, NRP, OCP, PMA, SGL, SML, TSL, WCP, WTR  
Also available in RAL Finishes  
Brass Finishes (MAC, POL, MT)

**LENS TYPE:**  
L2 - Soft Focus L3 - Rectilinear

**SHIELDING:**  
S - Homogenous Baffle

**CAP STYLE:**  
A - 45°  
B - 90°  
C - Flush Lens  
D - 45° Lens Wedgehole (Interior use only)  
E - 90° Lens Wedgehole (Interior use only)

**OPTIONS:**  
MTC - Movable Mounting System\*\*

**MOD OPTIONS:**  
S - 5 Ft Leads  
L - 10 Ft Leads

**B-K LIGHTING** MADE IN THE USA 333.438.3360 | INFO@BKLIGHTING.COM | BKLIGHTING.COM

TREE CANOPY UPLIGHTING



**KURV-SW** Q-CAP Flexible Fixtures

KURV-SW is a fully encapsulated flexible linear LED fixture suitable for use in direct viewing applications because diodes are not visible due to its unique shape. KURV has a built-in parabolic curve, which allows the fixture to push out asymmetrical light with its internal reflector. Because of its dry and wet rating, it is perfect for not only indoor use but also as outdoor accent lighting, especially when the light needs to be wrapped around a mass. KURV-SW encapsulates our one step, one bin 24-watt spots where LED spots in polyethylene. It is offered in three different outputs: standard output (1.0W/ft), high output (3.0W/ft), and very high output (5.0W/ft). Available in a clear finish, where diodes are visible, or a translucent finish, where light is diffused.

**Output** (Calculated L70 = 40000 hours)

CCT	SD Standard Output 1.0 W/ft			HO High Output 3.0 W/ft			VHO Very High Output 5.0 W/ft		
	LM	LM	LM	LM	LM	LM	LM	LM	LM
3000K	110	34	153	34	102	171	34	102	171
3700K	110	34	153	34	102	171	34	102	171
4000K	110	34	153	34	102	171	34	102	171
5000K	110	34	153	34	102	171	34	102	171

**Part Number Builder**

SW comes in standard 24" - request custom length (Min: 120") by writing it in inches next to "SW" in the order code box (ex: SW48).  
**Connector/Wire in or Out** not needed to specify product. Standard configuration is SW & Connector/Wire Out. N/A with wire endcap (WEC).  
**PPS** mounting strip recommended for seamless applications.  
**SBM** not recommended to be used in chlorinated water. Available only in S1 or S5 wire exits (Type).

**Flexibility**

- 5 year warranty
- Field modifications are not covered under Q-Train warranty
- Side Bend
- IK10 impact rated
- Data subject to change, all data has +/- 5% tolerance
- PPS-PT is to be cut at Q-Train to requested length
- Ambient or mounting surface must not be lower than -4°F or higher than 50 - 125°F, HO - 115°F, VHO - 105°F

© 2022 Q-Train Inc. All rights reserved. | 130 145 St. Miami, FL 33142 | 333.438.3360 | info@qtrain.com | www.qtrain.com | Specifications subject to change. Rev: 03-20-22

SEAT WALL LIGHTING



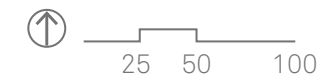


# EXISTING SITE PLAN

ALTON ROAD TO BISCAYNE WATERWAY



11 ON-STREET PARKING SPACES



# PROPOSED PLAN

ALTON ROAD TO BISCAIYNE WATERWAY



- ROCK SALT FINISH CROSSWALK
- OASES PAVING SIDEWALK
- ASPHALT
- TREE REMOVED
- PLANTING AREA

ALL ON-STREET PARKING TO REMAIN



# EXISTING AND PROPOSED ELEVATIONS ALTON ROAD TO BISCAYNE WATERWAY



EXISTING NORTH ELEVATION



EXISTING SOUTH ELEVATION



PROPOSED NORTH ELEVATION



PROPOSED SOUTH ELEVATION

# EXISTING SITE PLAN

BISCAYNE WATERWAY TO PRAIRIE AVE



 26 ON-STREET PARKING SPACES



# PROPOSED PLAN

BISCAYNE WATERWAY TO PRAIRIE AVE



# EXISTING AND PROPOSED ELEVATIONS BISCAYNE WATERWAY TO PRAIRIE AVE



EXISTING NORTH ELEVATION



EXISTING SOUTH ELEVATION



PROPOSED NORTH ELEVATION



PROPOSED SOUTH ELEVATION

# EXISTING SITE PLAN

SHERIDAN AVE TO PINE TREE DR



 26 ON-STREET PARKING SPACES

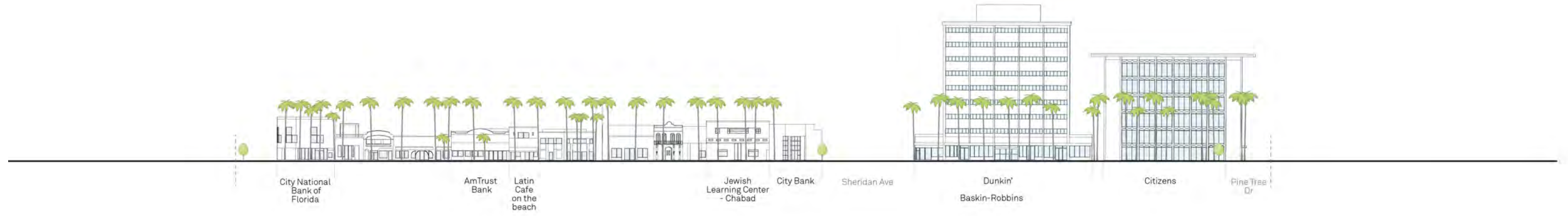


# PROPOSED PLAN

SHERIDAN AVE TO PINE TREE DR



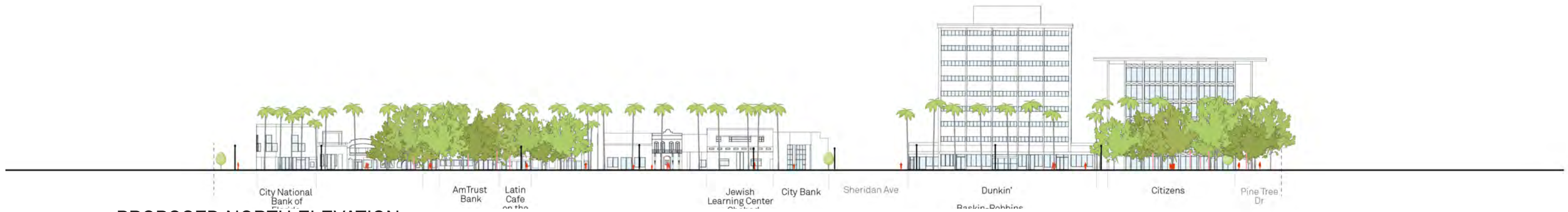
# EXISTING AND PROPOSED ELEVATIONS PRAIRIE AVE TO PINE TREE DRIVE



EXISTING NORTH ELEVATION



EXISTING SOUTH ELEVATION



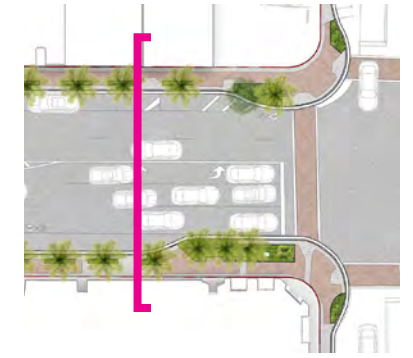
PROPOSED NORTH ELEVATION



PROPOSED SOUTH ELEVATION

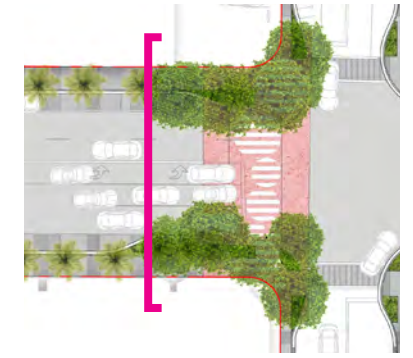
# EXISTING SECTION

TYPICAL "WALKS" SECTION



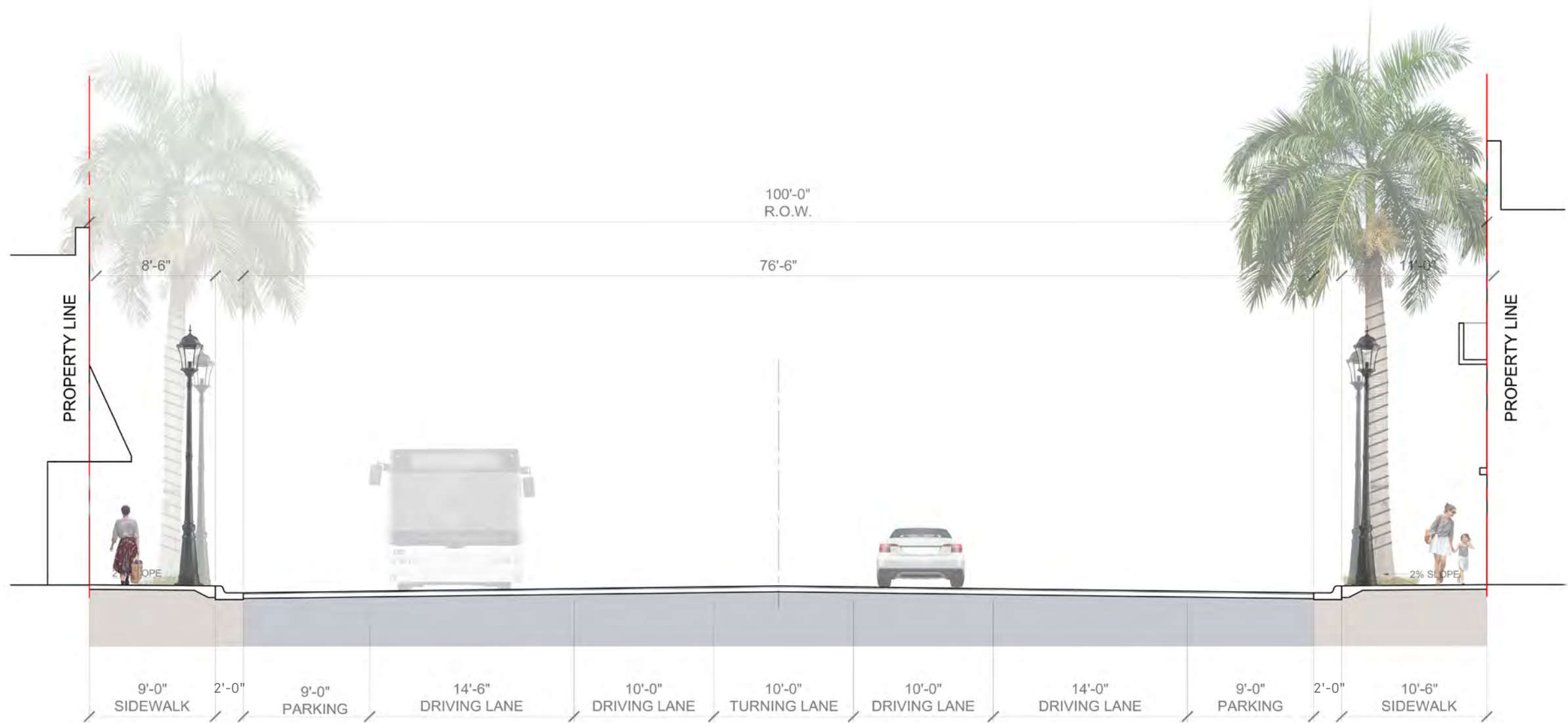
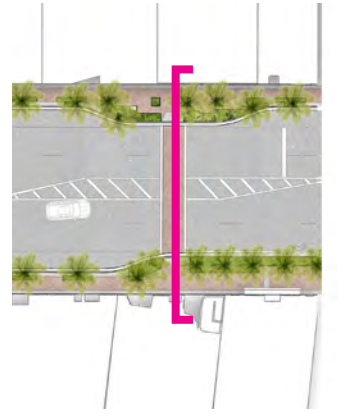
# PROPOSED SECTION

TYPICAL "WALKS" SECTION



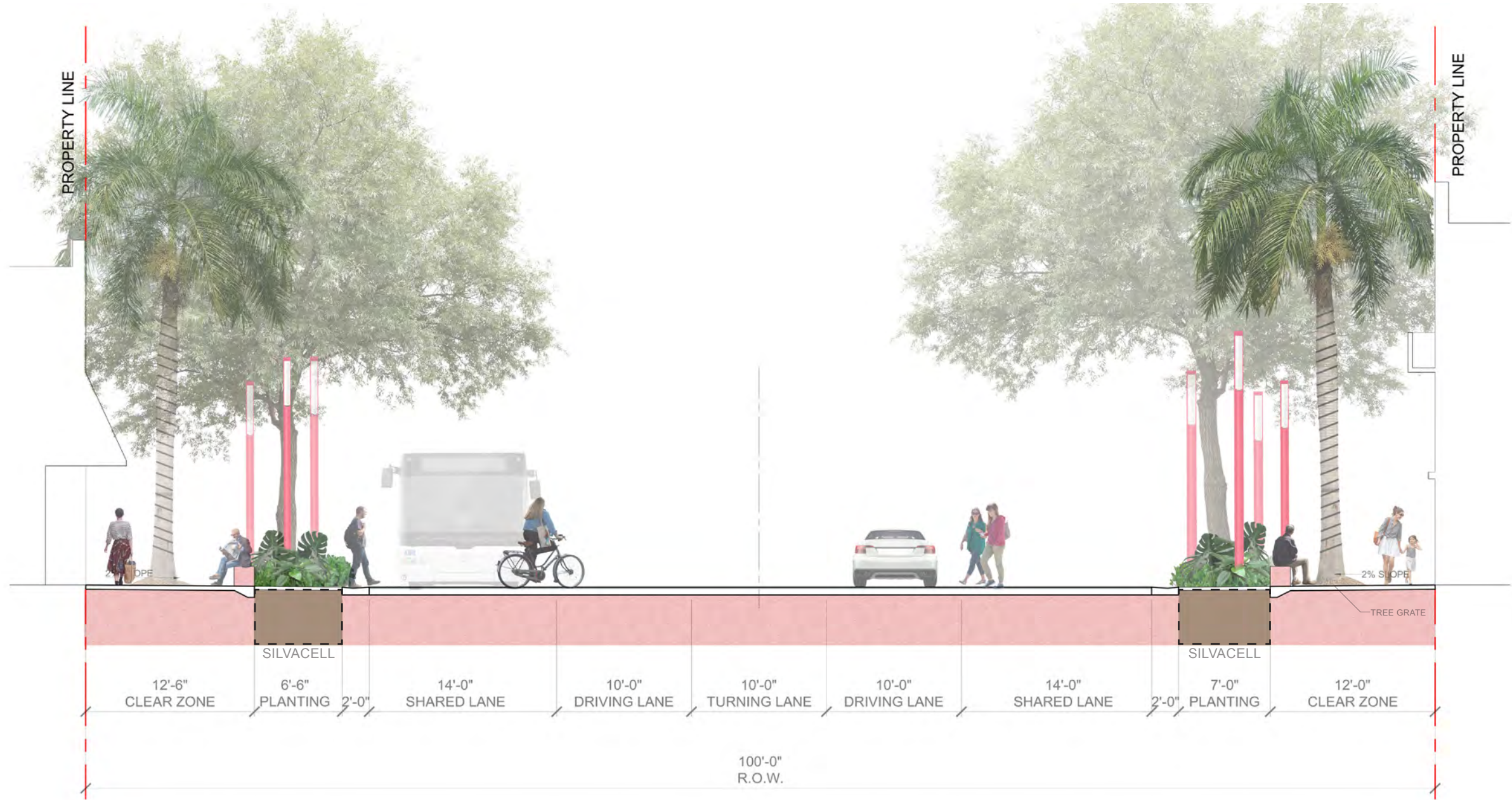
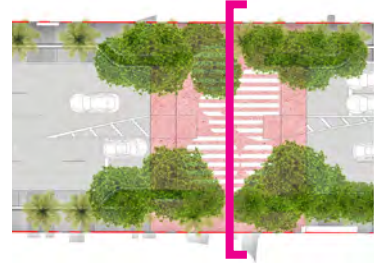
# EXISTING SECTION

TYPICAL "OASIS" SECTION



# PROPOSED SECTION

TYPICAL "OASIS" SECTION



# PROPOSED PUBLIC ART AND GATEWAY FEATURES

## ARCHITECTURAL CANOPY

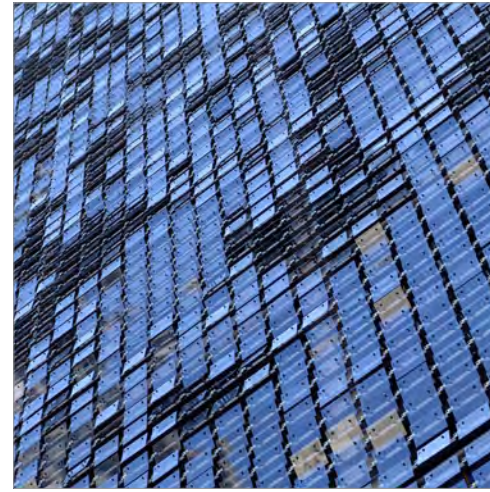
PRECEDENTS



Miami Beach Soundscape  
West 8



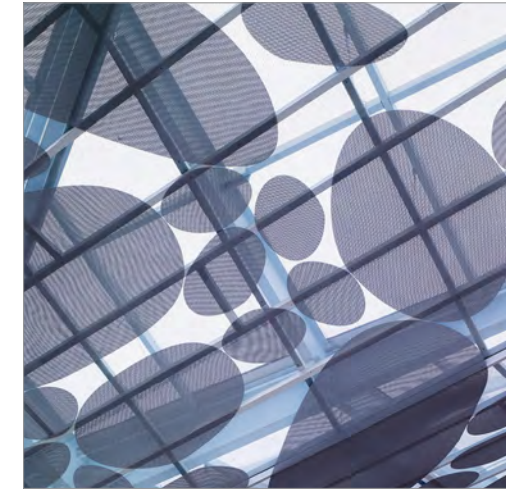
Miami Design District  
Bouroullec Brothers



Firefly - moving wall  
Ned Kahn



Gateway Pavilion  
Pembroke Pines, FL



CAM Museum of Art  
Raleigh, NC



Proposed Gateway Art Feature  
*bent pipe, metal mesh, marine grade paint*



Western Gateway at Alton Road



Eastern Gateway at Henry Liebman Square

# PROPOSED PLANTING PALETTE

EXISTING CANOPY



Royal Palm  
*Roystonea regia*



Strangler Fig  
*Ficus aurea*



Green Buttonwood  
*Conocarpus erectus*

LARGE CANOPY



Live Oak  
*Quercus virginiana*



Green Buttonwood  
*Conocarpus erectus*



Gumbo Limbo  
*Bursera simaruba*



Mahogany Tree  
*Swietenia mahogani*



Wild Tamarind  
*Lysiloma latisiliquum*

MEDIUM CANOPY



Silver Buttonwood  
*Conocarpus erectus*



Pigeon Plum  
*Coccoloba diversifolia*

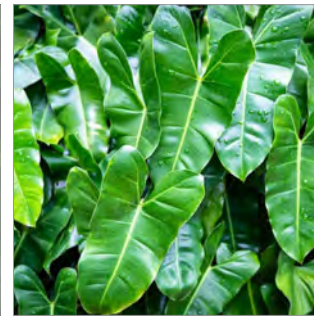


Autograph Tree  
*Clusia rosea*

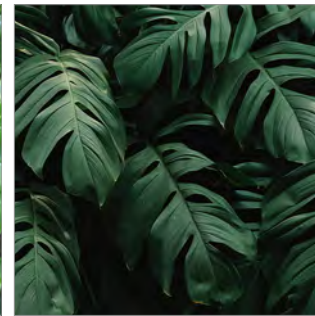
GROUND COVERS



Wart Fern  
*Phymatosorus scolopendria*



Philodendron 'Burle-Marx'  
*Philodendron burle-marxii*



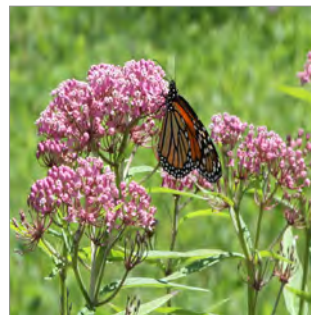
Monstera  
*Monstera deliciosa*



Dwarf palmetto  
*Sabal minor*



Muhly Grass  
*Muhlenbergia capillaris*



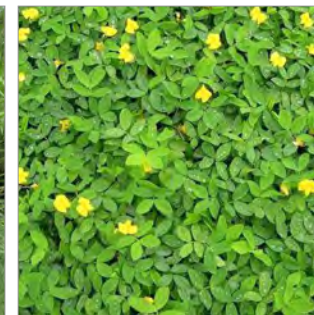
Milkweed  
*Asclepias syriaca*



Spartina Grass  
*Spartina*



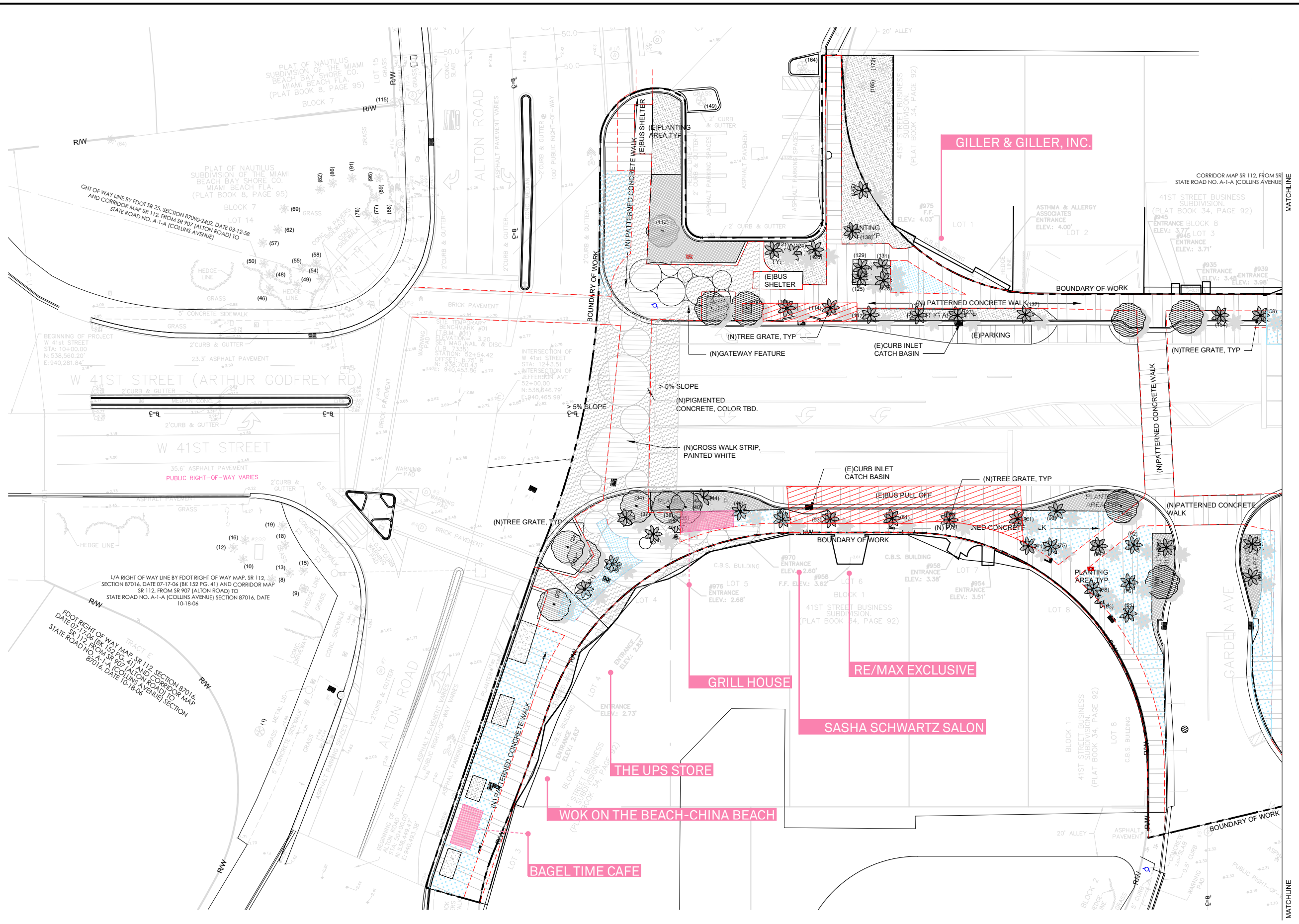
Fakahatchee Grass  
*Tripsacum dactyloides*



Perennial Peanut  
*Arachis glabrata*







NOTES:

- EXISTING SEATING
- POTENTIAL SEATING
- NOT TO BLOCK
- 7' CLEAR WALKWAY
- NEW TREES
  - TREE
  - PALM
- EXISTING TREES
  - TREE
  - PALM
- OFF-SITE TREES
  - TREE
  - PALM
- SPARTINA GRASS
- PERENNIAL PEANUT
- WART FERN, PHILODENDRON, MONSTERA, DWARF PALMETTO



ARCH. SEAL:

**MIAMI BEACH**  
 OFFICE OF CAPITAL IMPROVEMENT PROJECTS  
 1701 MERIDIAN AVENUE, MIAMI BEACH, FL 33139

CITY MANAGER: ALINA T. HUDAK	5			
DIRECTOR: DAVID MARTINEZ, P.E.	4			
PUBLIC WORK DIRECTOR: JOE GOMEZ, P.E.	3			
CITY ENGINEER: CRISTINA ORTEGA CASTINEIRAS, P.E.	2			
	1			
NO.	DATE	REVISION	APP'D. BY	

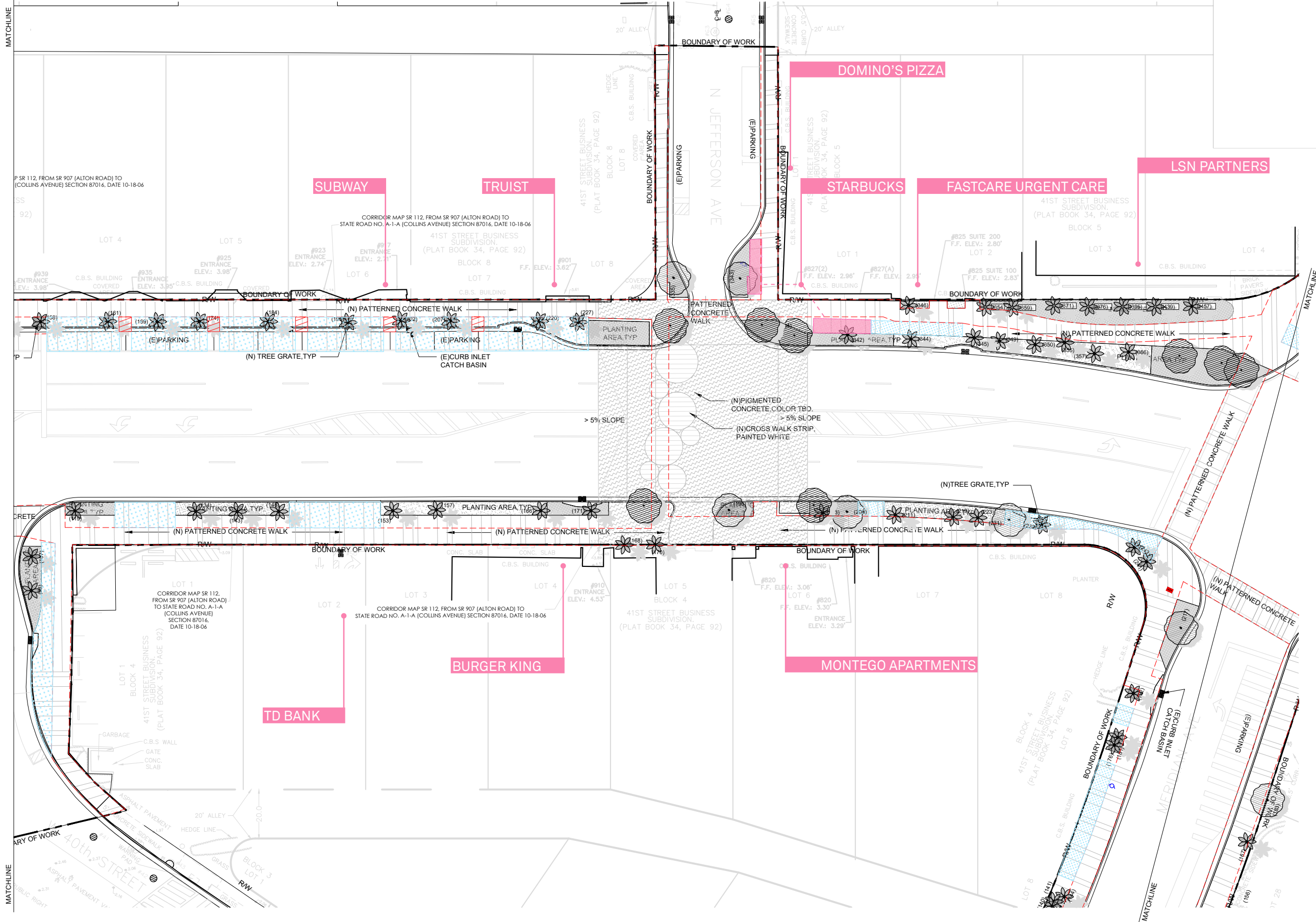
**BROOKS + SCARPA**  
 1147 NE 7th Ave  
 Fort Lauderdale, FL 33304

ARCHITECT OF RECORD:  
 ARCHITECT OF RECORD:  
 DESIGN ARCHITECT: XXX  
 DRAWN BY: XXX  
 CHECKER: XXX  
 SCALE: 1"=20'

NEIGHBORHOOD: **41ST ST CORRIDOR REVITALIZATION**  
 TITLE: **OUTDOOR SEATING DIAGRAM**

File Name: 41STCORR - LX - SEATING-PineTree.dwg  
 Survey Reference:  
 Field Book: N/A Page: N/A Work Order: N/A  
 Date: 4/17/2023 Sheet: ##### of 124

THIS SPACE RESERVED FOR PROJECT MILESTONE



- NOTES:
- EXISTING SEATING
  - POTENTIAL SEATING
  - NOT TO BLOCK
  - 7' CLEAR WALKWAY
  - NEW TREES
    - TREE
    - PALM
  - EXISTING TREES
    - TREE
    - PALM
  - OFF-SITE TREES
    - TREE
    - PALM
  - SPARTINA GRASS
  - PERENNIAL PEANUT
  - WART FERN, PHILODENDRON, MONSTERA, DWARF PALMETTO



ARCH. SEAL:

**MIAMI BEACH**  
 OFFICE OF CAPITAL IMPROVEMENT PROJECTS  
 1701 MERIDIAN AVENUE, MIAMI BEACH, FL 33139

CITY MANAGER: ALINA T. HUDAK  
 DIRECTOR: DAVID MARTINEZ, P.E.  
 PUBLIC WORK DIRECTOR: JOE GOMEZ, P.E.  
 CITY ENGINEER: CRISTINA ORTEGA CASTINEIRAS, P.E.

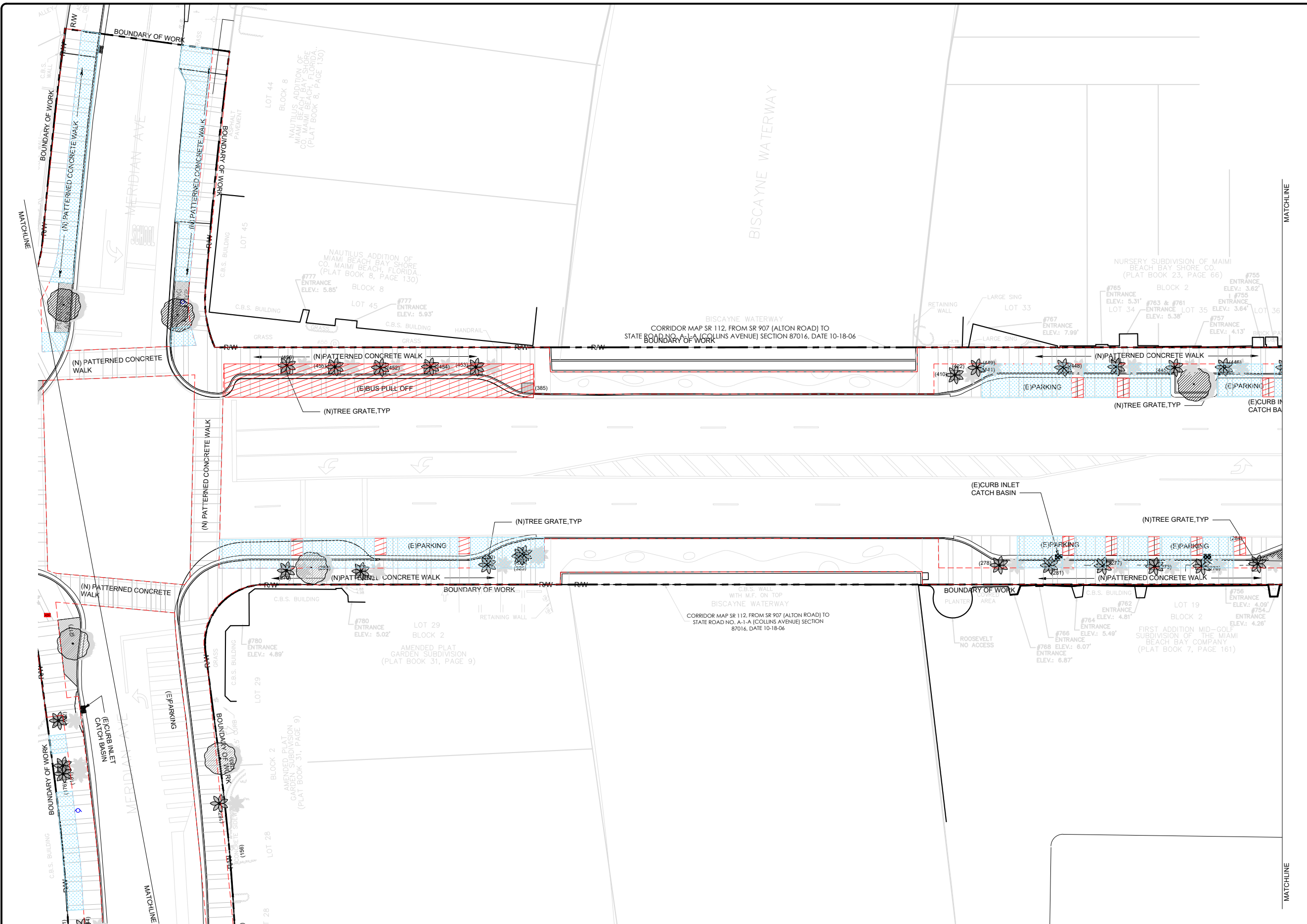
NO.	DATE	REVISION	APP'D. BY
5			
4			
3			
2			
1			

**BROOKS + SCARPA**  
 1147 NE 7th Ave  
 Fort Lauderdale, FL 33304

ARCHITECT OF RECORD:  
 ARCHITECT OF RECORD:  
 DESIGN ARCHITECT: XXX  
 DRAWN BY: XXX  
 CHECKER: XXX  
 SCALE: 1"=20'

NEIGHBORHOOD: 41ST ST CORRIDOR REVITALIZATION  
 TITLE: OUTDOOR SEATING DIAGRAM

File Name: 41STCORR - LX - SEATING-PineTree.dwg  
 Survey Reference:  
 Field Book: N/A Page: N/A Work Order: N/A  
 Date: 4/17/2023 Sheet: ##### of 124



- NOTES:
- EXISTING SEATING
  - POTENTIAL SEATING
  - NOT TO BLOCK
  - 7' CLEAR WALKWAY
  - NEW TREES
    - TREE
    - PALM
  - EXISTING TREES
    - TREE
    - PALM
  - OFF-SITE TREES
    - TREE
    - PALM
  - SPARTINA GRASS
  - PERENNIAL PEANUT
  - WART FERN, PHILODENDRON, MONSTERA, DWARF PALMETTO



ARCH. SEAL:

**MIAMI BEACH**  
 OFFICE OF CAPITAL IMPROVEMENT PROJECTS  
 1701 MERIDIAN AVENUE, MIAMI BEACH, FL 33139

CITY MANAGER: ALINA T. HUDAK  
 DIRECTOR: DAVID MARTINEZ, P.E.  
 PUBLIC WORK DIRECTOR: JOE GOMEZ, P.E.  
 CITY ENGINEER: CRISTINA ORTEGA CASTINEIRAS, P.E.

NO.	DATE	REVISION	APP'D. BY
5			
4			
3			
2			
1			

**BROOKS + SCARPA**  
 1147 NE 7th Ave  
 Fort Lauderdale, FL 33304

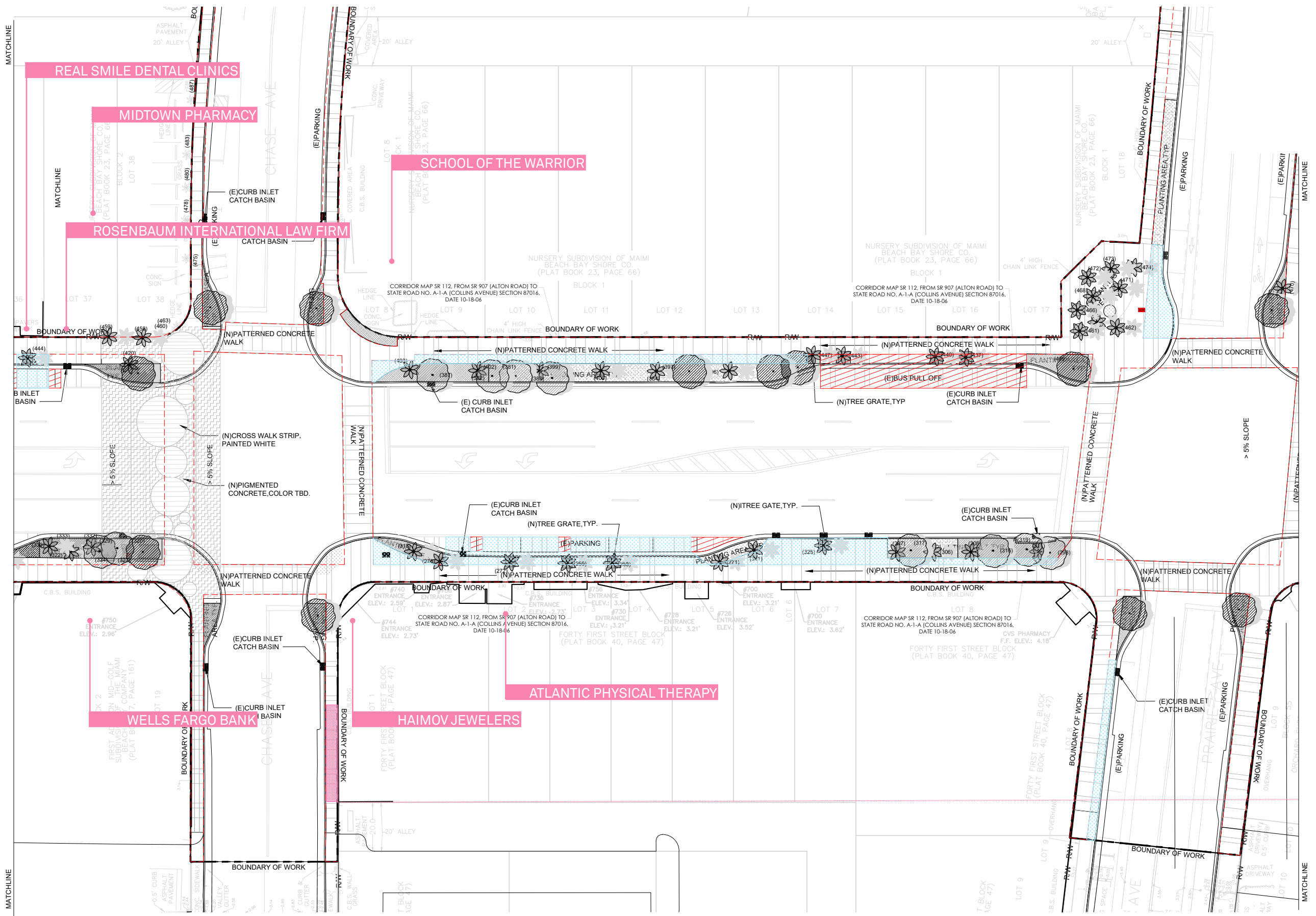
ARCHITECT OF RECORD: Jeffrey Huber  
 #AR95514  
 #LA6667547

ARCHITECT OF RECORD: DESIGN ARCHITECTXXX  
 DRAWN BY: XXX  
 CHECKER: XXX  
 SCALE: 1"=20'

NEIGHBORHOOD: 41ST ST CORRIDOR REVITALIZATION

TITLE: OUTDOOR SEATING DIAGRAM

File Name: 41STCORR - LX - SEATING-PineTree.dwg  
 Survey Reference:  
 Field Book: N/A Page: N/A Work Order: N/A  
 Date: 4/17/2023 Sheet: #### of 124



- NOTES:
- EXISTING SEATING
  - POTENTIAL SEATING
  - NOT TO BLOCK
  - 7' CLEAR WALKWAY

- NEW TREES
  - TREE
  - PALM
- EXISTING TREES
  - TREE
  - PALM
- OFF-SITE TREES
  - TREE
  - PALM
- SPARTINA GRASS
- PERENNIAL PEANUT
- WART FERN, PHILODENDRON, MONSTERA, DWARF PALMETTO



ARCH. SEAL:

**MIAMI BEACH**  
 OFFICE OF CAPITAL IMPROVEMENT PROJECTS  
 1701 MERIDIAN AVENUE, MIAMI BEACH, FL 33139

CITY MANAGER: ALINA T. HUDAK  
 DIRECTOR: DAVID MARTINEZ, P.E.  
 PUBLIC WORK DIRECTOR: JOE GOMEZ, P.E.  
 CITY ENGINEER: CRISTINA ORTEGA CASTINEIRAS, P.E.

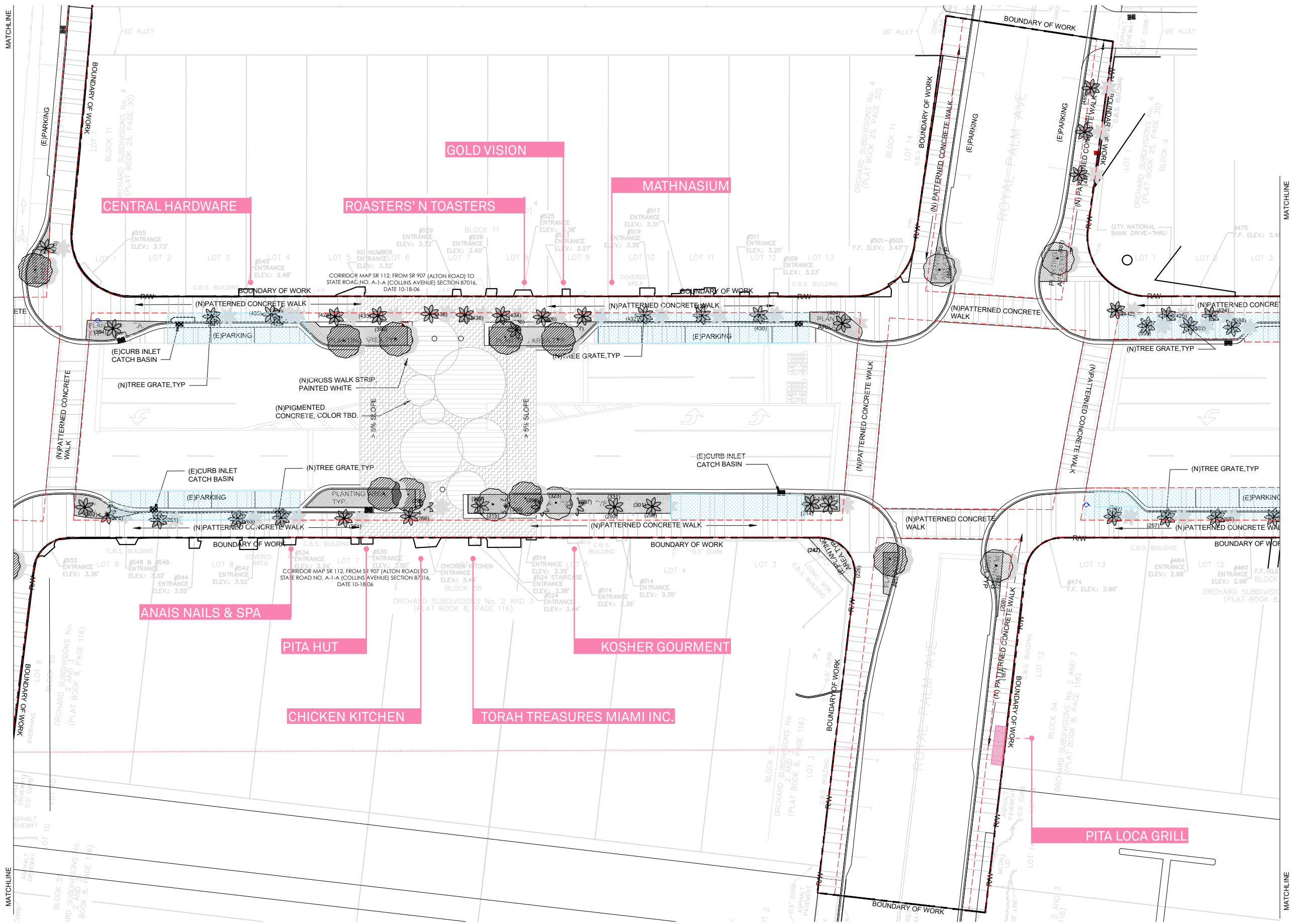
NO.	DATE	REVISION	APP'D. BY
5			
4			
3			
2			
1			

**BROOKS + SCARPA**  
 BROOKS + SCARPA  
 1147 NE 7th Ave  
 Fort Lauderdale, FL 33304

ARCHITECT OF RECORD:  
 ARCHITECT OF RECORD:  
 DESIGN ARCHITECT: XXX  
 DRAWN BY: XXX  
 CHECKER: XXX  
 SCALE: 1"=20'

NEIGHBORHOOD: 41ST ST CORRIDOR REVITALIZATION  
 TITLE: OUTDOOR SEATING DIAGRAM

File Name: 41STCORR - LX - SEATING-PineTree.dwg  
 Drawing:  
 Survey Reference:  
 Field Book: N/A Page: N/A Work Order: N/A  
 Date: 4/17/2023 Sheet: ##### of 124



- NOTES:
- EXISTING SEATING
  - POTENTIAL SEATING
  - NOT TO BLOCK
  - 7' CLEAR WALKWAY

- NEW TREES
  - TREE
  - PALM
- EXISTING TREES
  - TREE
  - PALM
- OFF-SITE TREES
  - TREE
  - PALM
- SPARTINA GRASS
- PERENNIAL PEANUT
- WART FERN, PHILODENDRON, MONSTERA, DWARF PALMETTO



ARCH. SEAL:

**MIAMI BEACH**  
 OFFICE OF CAPITAL IMPROVEMENT PROJECTS  
 1701 MERIDIAN AVENUE, MIAMI BEACH, FL 33139

CITY MANAGER: ALINA T. HUDAK	5		
DIRECTOR: DAVID MARTINEZ, P.E.	4		
PUBLIC WORK DIRECTOR: JOE GOMEZ, P.E.	3		
CITY ENGINEER: CRISTINA ORTEGA CASTINEIRAS, P.E.	2		
	1		
NO.	DATE	REVISION	APP'D. BY

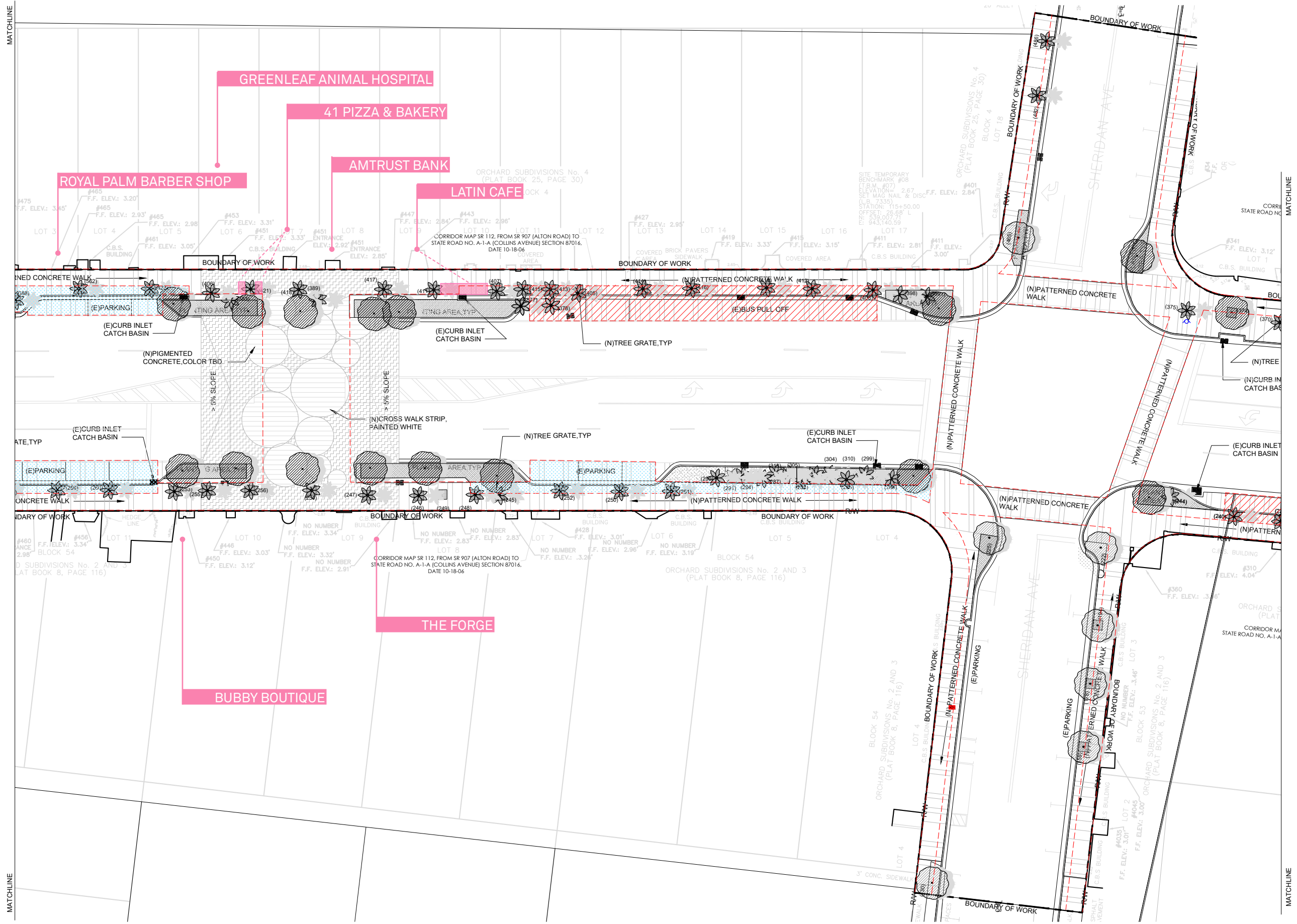
**BROOKS + SCARPA**  
 1147 NE 7th Ave  
 Fort Lauderdale, FL 33304

ARCHITECT OF RECORD:  
 ARCHITECT OF RECORD:  
 DESIGN ARCHITECT: XXX  
 DRAWN BY: XXX  
 CHECKER: XXX  
 SCALE: 1"=20'

NEIGHBORHOOD: 41ST ST CORRIDOR REVITALIZATION  
 TITLE: OUTDOOR SEATING DIAGRAM

File Name: 41STCORR - LX - SEATING-PineTree.dwg  
 Survey Reference:  
 Field Book: N/A Page: N/A Work Order: N/A  
 Date: 4/17/2023 Sheet: ##### of 124

THIS SPACE RESERVED FOR PROJECT MILESTONE



- NOTES:
- EXISTING SEATING
  - POTENTIAL SEATING
  - NOT TO BLOCK
  - 7' CLEAR WALKWAY

- NEW TREES
  - TREE
  - PALM
- EXISTING TREES
  - TREE
  - PALM
- OFF-SITE TREES
  - TREE
  - PALM
- SPARTINA GRASS
- PERENNIAL PEANUT
- WART FERN, PHILODENDRON, MONSTERA, DWARF PALMETTO



ARCH. SEAL:

**MIAMI BEACH**  
 OFFICE OF CAPITAL IMPROVEMENT PROJECTS  
 1701 MERIDIAN AVENUE, MIAMI BEACH, FL 33139

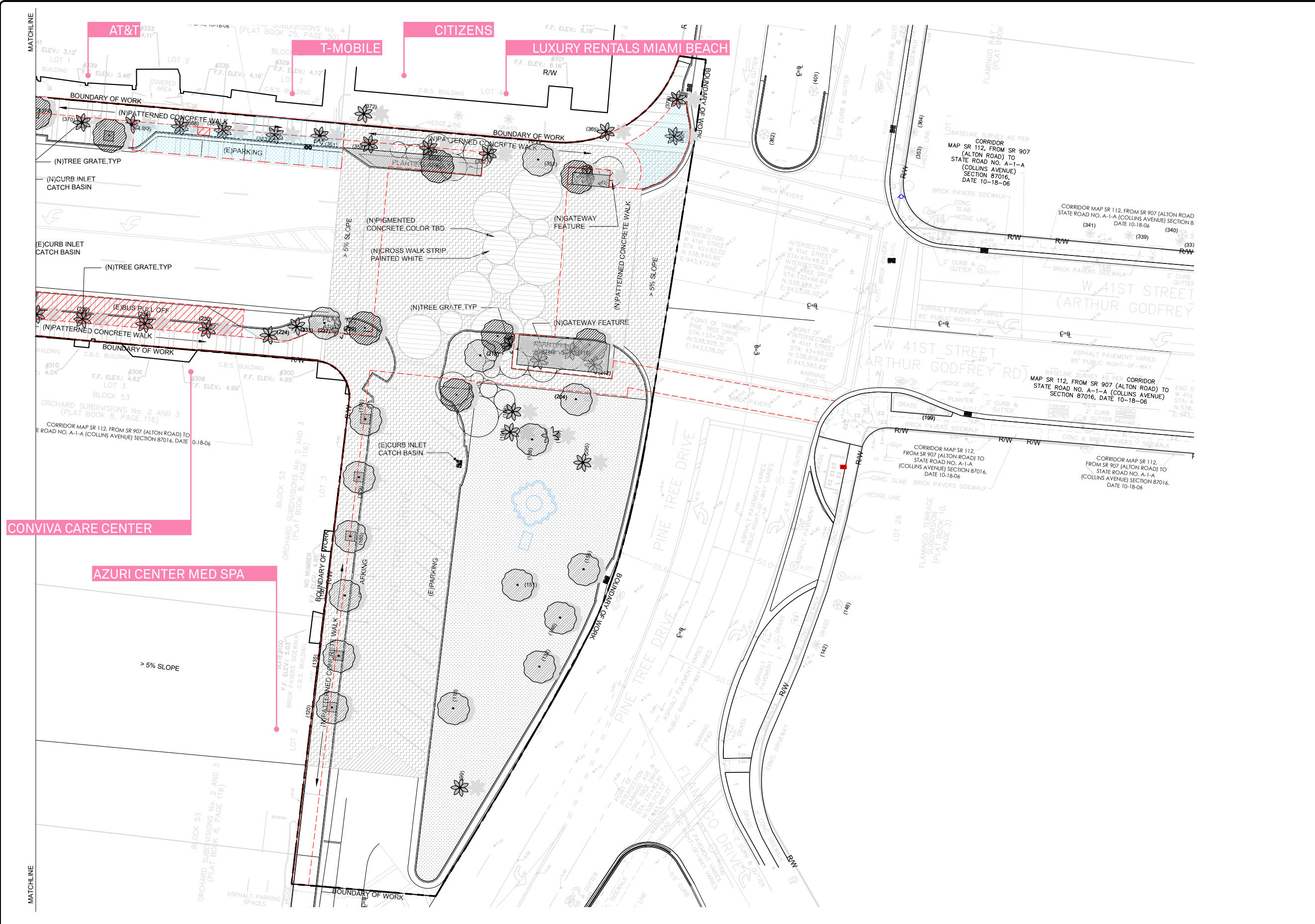
CITY MANAGER: ALINA T. HUDAK	5			
DIRECTOR: DAVID MARTINEZ, P.E.	4			
PUBLIC WORK DIRECTOR: JOE GOMEZ, P.E.	3			
CITY ENGINEER: CRISTINA ORTEGA CASTINEIRAS, P.E.	2			
	1			
NO.	DATE	REVISION	APP'D. BY	

**BROOKS + SCARPA**  
 1147 NE 7th Ave  
 Fort Lauderdale, FL 33304

ARCHITECT OF RECORD:  
 ARCHITECT OF RECORD:  
 DESIGN ARCHITECT: XXX  
 DRAWN BY: XXX  
 CHECKER: XXX  
 SCALE: 1"=20'

NEIGHBORHOOD: **41ST ST CORRIDOR REVITALIZATION**  
 TITLE: **OUTDOOR SEATING DIAGRAM**

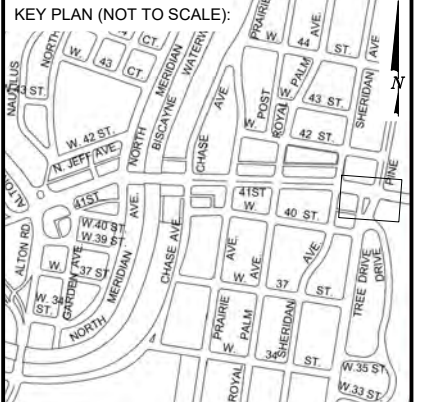
File Name: 41STCORR - LX - SEATING-PineTree.dwg  
 Survey Reference:  
 Field Book: N/A Page: N/A Work Order: N/A  
 Date: 4/17/2023 Sheet: ### of 124



NOTES:

- EXISTING SEATING
- POTENTIAL SEATING
- NOT TO BLOCK
- 7' CLEAR WALKWAY

- NEW TREES
  - TREE
  - PALM
- EXISTING TREES
  - TREE
  - PALM
- OFF-SITE TREES
  - TREE
  - PALM
- SPARTINA GRASS
- PERENNIAL PEANUT
- WART FERN, PHILODENDRON, MONSTERA, DWARF PALMETTO



ARCH. SEAL:

**MIAMI BEACH**  
 OFFICE OF CAPITAL IMPROVEMENT PROJECTS  
 1701 MERIDIAN AVENUE, MIAMI BEACH, FL 33139

CITY MANAGER: ALINA T. HUDAK  
 DIRECTOR: DAVID MARTINEZ, P.E.  
 PUBLIC WORK DIRECTOR: JOE GOMEZ, P.E.  
 CITY ENGINEER: CRISTINA ORTEGA CASTINEIRAS, P.E.

NO.	DATE	REVISION	APP'D. BY
5			
4			
3			
2			
1			

**BROOKS + SCARPA**  
 1147 NE 7th Ave  
 Fort Lauderdale, FL 33304

ARCHITECT OF RECORD: Jeffrey Huber  
 #AR95514  
 #LA6667547

ARCHITECT OF RECORD: DESIGN ARCHITECTXXX  
 DRAWN BY: XXX  
 CHECKER: XXX  
 SCALE: 1"=20'

NEIGHBORHOOD: 41ST ST CORRIDOR REVITALIZATION  
 TITLE: OUTDOOR SEATING DIAGRAM

File Name: 41STCORR - LX - SEATING-PineTree.dwg  
 Survey Reference:  
 Field Book: N/A Page: N/A Work Order: N/A  
 Date: 4/17/2023 Sheet: #### of 124

THIS SPACE RESERVED FOR PROJECT MILESTONE